



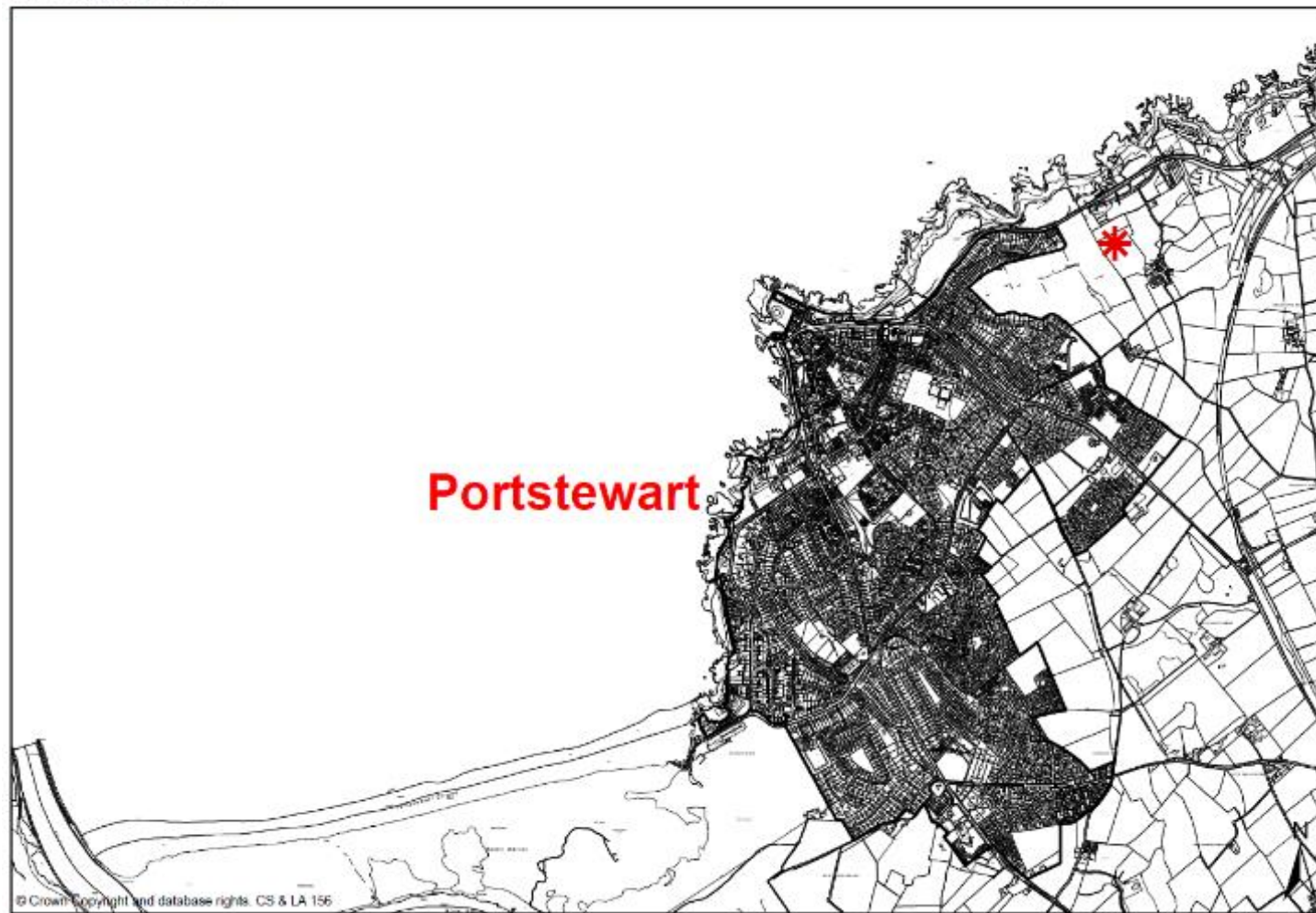
Causeway  
Coast & Glens  
Borough Council

# LA01/2016/1328/F

Full application for a Hotel and Spa Complex ( including conference and banqueting facilities, holiday cottages, North West 200 visitor attraction (including exhibition space, tourist retail unit (c.150 sqm) and office space), demonstration restaurant, car/coach parking, access/junction alterations, landscaping, private sewerage treatment plant and water bore holes together with associated apparatus/infrastructure works on land south of 120 Ballyreagh Road (A2), Portstewart, BT55 7PT

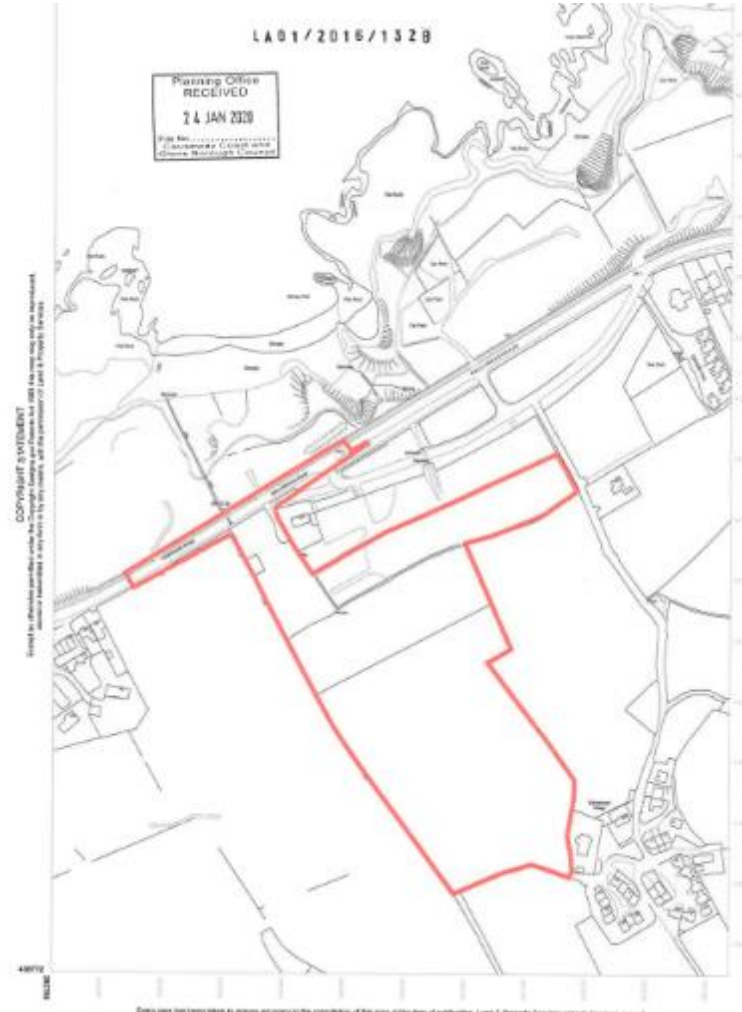


LA01/2016/1328/F





Causeway  
Coast & Glens  
Borough Council





Causeway  
Coast & Glens  
Borough Council







Causeway  
Coast & Glens  
Borough Council

TOP OF CONFERENCE ROOF +33.25M ▾



FRONT (NORTH) ELEVATION 1:250@A1

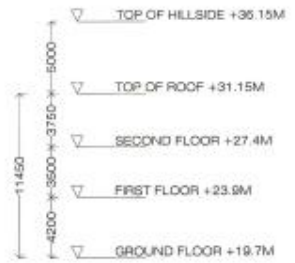
TOP OF CONFERENCE ROOF +33.25M ▾



SIDE (WEST) ELEVATION 1:250@A1



Causeway  
Coast & Glens  
Borough Council



SIDE (EAST) ELEVATION 1:250@A1



SIDE (WEST ELEVATION) 1:100@A3



SIDE (EAST ELEVATION) 1:100@A3



FRONT (NORTH ELEVATION) 1:100@A3

Drawn  
Number



REAR (SOUTH ELEVATION) 1:100@A3





FRONT (NORTH ELEVATION) 1:100@A3



REAR (SOUTH ELEVATION) 1:100@A3



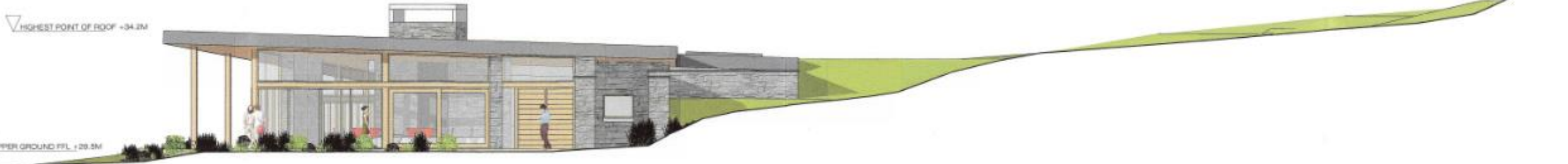
SIDE (WEST ELEVATION) 1:100@A3



SIDE (EAST ELEVATION) 1:100@A3



FRONT (NORTH) ELEVATION 1:100@A1



SIDE (WEST) ELEVATION 1:100@A1



Causeway  
Coast & Glens  
Borough Council



Ballygelagh  
village

View from edge of Portstewart

13/11/2023



Figure 7b Viewpoint 3: No.49 Portrush Road (A2), Portstewart



Area Planning Office  
RECEIVED  
31 OCT 2016  
File No.....  
Coleraine 4

Drawing  
Number.....  
Causeway Coast and  
Glens District Council



Causeway  
Coast & Glens  
Borough Council

Ballygelagh  
village

No.100



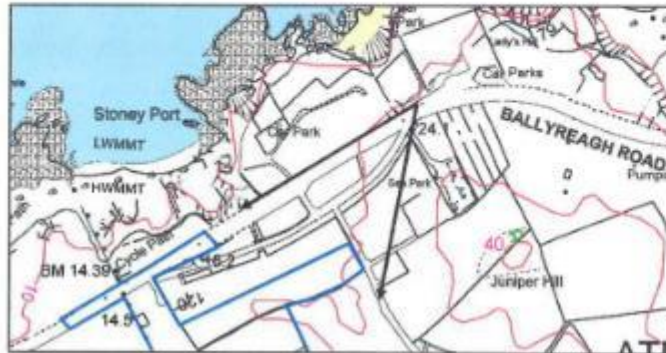
View travelling to Portstewart

13/11/2023



Figure 10b Viewpoint 6: Ballyreagh Road (A2) near Rinnagree Point car park

Area Planning Office  
RECEIVED  
31 OCT 2016  
File No. ....  
Column 4



.....  
.....  
.....



Causeway  
Coast & Glens  
Borough Council



No.22

No.108



13/11/2023

View from Ballygelagh Village (front of Nos. 108 and 22)



Causeway  
Coast & Glens  
Borough Council

No.22

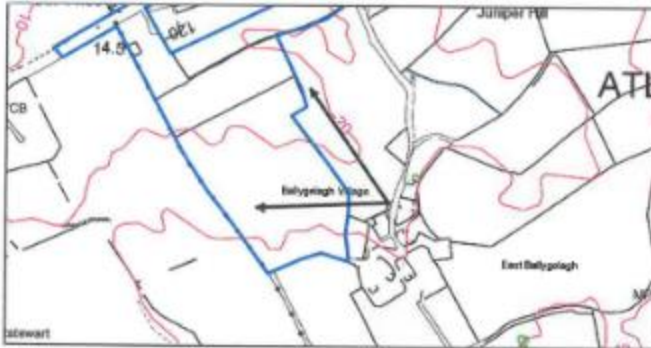


13/11/2023





Figure 11b Viewpoint 7: Edge of Ballygelagh Village



Area Planning Office  
RECEIVED  
31 OCT 2016  
File No. ....  
Colopine 4

Drawing  
Number.....  
Causeway Coast and  
Glens Borough Council



Causeway  
Coast & Glens  
Borough Council

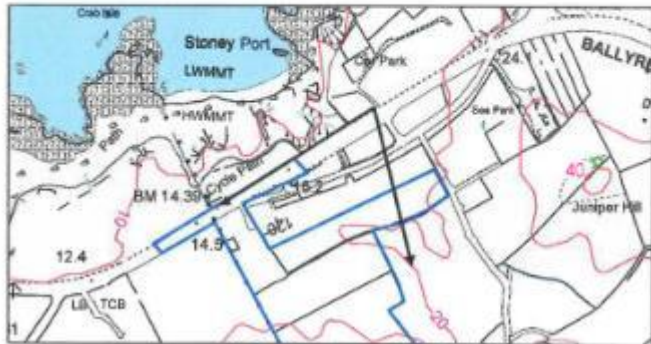


**View from Rinnagree Coastal Car Park**

13/11/2023



Figure 13b Viewpoint 9: Ballyreagh Road (A2) by Rinnagree Coastal Park car park



Arc 6 Planning Office  
RECEIVED  
31 OCT 2016  
File No. ....  
Drawing 4

Drawing  
File No. ....



Causeway  
Coast & Glens  
Borough Council

Ballygelagh  
village

No.120

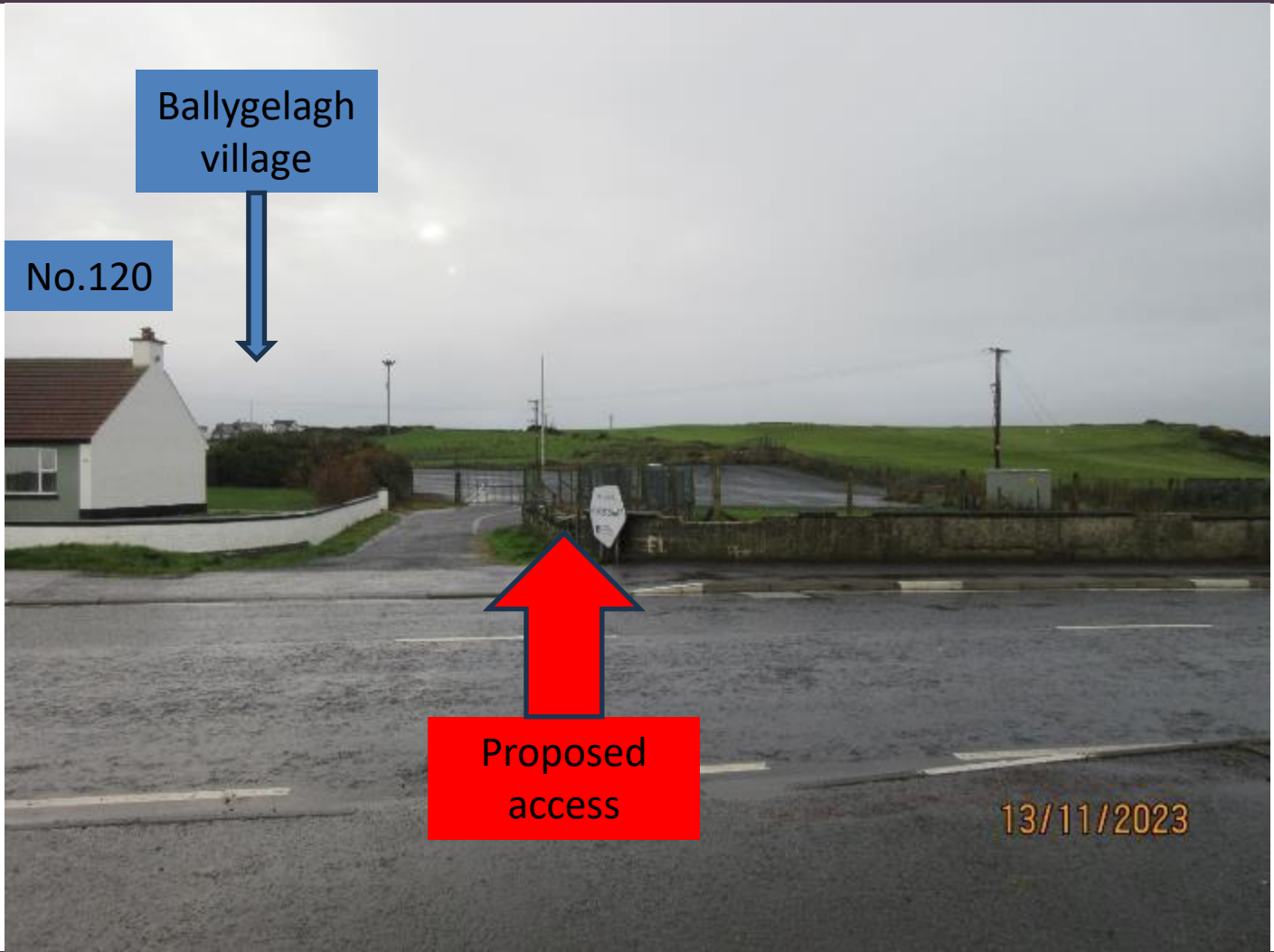


13/11/2023



Causeway  
Coast & Glens  
Borough Council





Ballygelagh  
village

No.120

Proposed  
access

13/11/2023



Causeway  
Coast & Glens  
Borough Council





Causeway  
Coast & Glens  
Borough Council

