



Delivering what matters

NI Water Presentation Causeway Coast & Glens Borough Council

4th March 2025

**Dr Stephen Blockwell, Head of Investment Management,
Engineering & Sustainability Directorate
&
Gavin McCready, Head of Wastewater,
Customer & Operations Directorate**

Contacting NI Water:

Elected Representative Direct Line – 0345 3006461

Waterline – 03457 440088 or waterline@niwater.com

About NI Water

It costs around £680m each year to deliver water services in Northern Ireland. Thousands of assets at a value of around £4bn, are operated and maintained to provide these services. This includes over 43,000km of water mains and sewers - one and a half times longer than Northern Ireland's entire road network and long enough to circle planet earth.



Households and businesses

Our customers rely on the services we provide

920k

Water treatment works

We clean the water, making it safe to drink

24

Water mains length

We distribute the drinking water to our customers through water mains

27,000 km

Pumping stations

We use pumping stations to get the drinking water to our customers

355

Service reservoirs

We store the drinking water in service reservoirs*

287



750k

Households and businesses

We collect wastewater from our customers

16,500 km

Length of sewers

We collect wastewater from our customers using a network of sewers

1,356

Pumping stations

We use pumping stations to get the wastewater to our treatment works

1,027

Wastewater treatment works

We treat wastewater and return it safely to the environment

66

Sludge management centres

Sludge is de-watered before being incinerated

*Number of service reservoirs in service and scheduled for regulatory sampling in line with the drinking water regulations.

NI's wastewater system is at breaking point



- System can't cope during heavy rainfall so spills to the environment.
- 40% (c.950) of all storm overflows already failing the standard with 1,200 still to be assessed.
- The wastewater system is contributing to poor quality of watercourses and requires several billion to fix.

2007 environmental dispensation to operate at lesser standards only meant to be short-term pending investment.

Proactive management occurring at Lough Neagh that ensures water is safe to drink

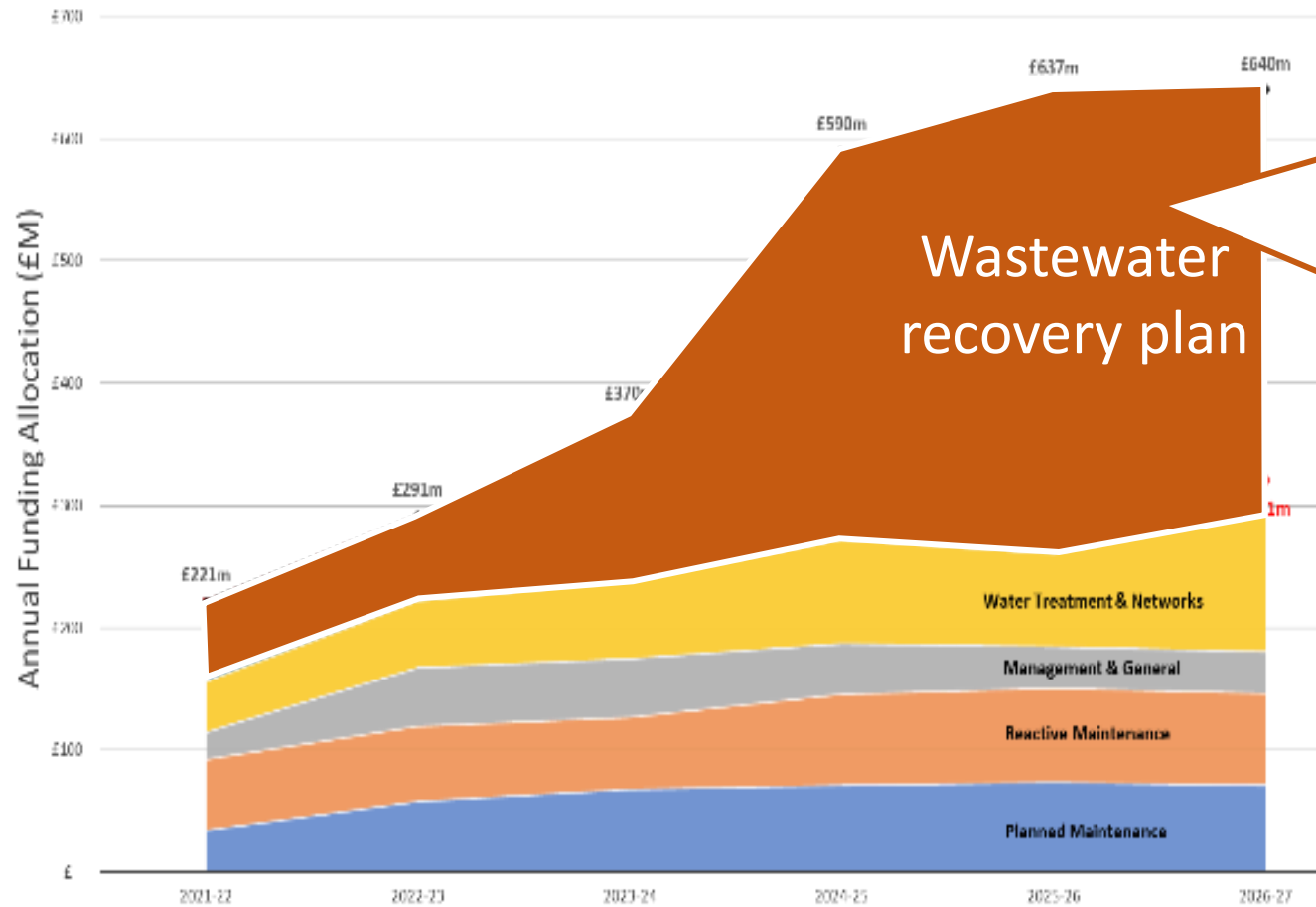


Blue-green algae is caused by the presence of high levels of nutrients in the Lough.

Working in partnership with NIEA to mitigate the impact on drinking water:

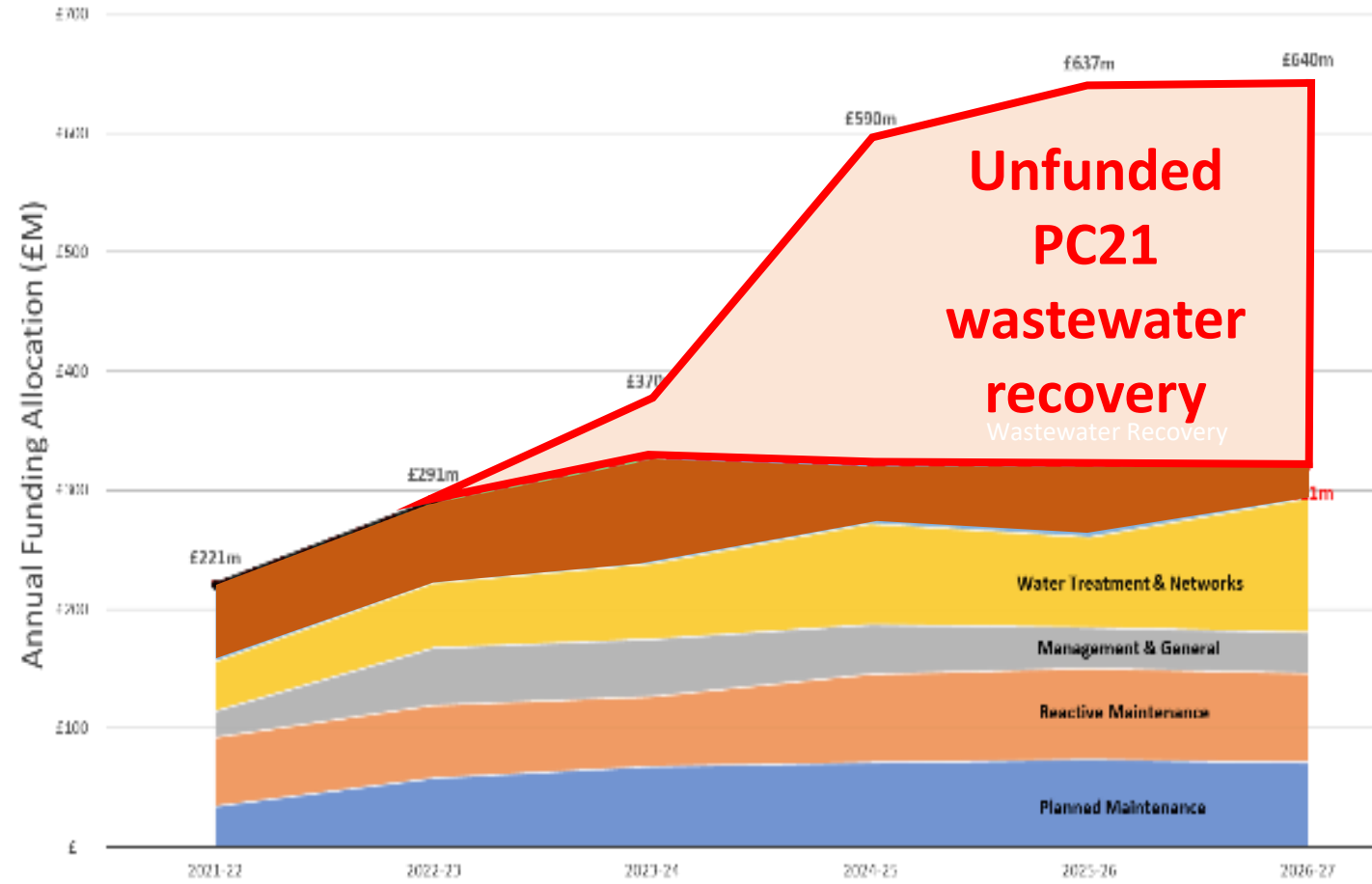
- Additional operational activities at our water treatment works and effective maintenance of the multi barrier system.
- Flushing out the pipes across our network.
- Additional drinking water quality sampling.
- Extensive media campaign to reassure customers their water safe to drink and explain why they may notice a change in taste and odour.

Our PC21 plan set out to redress years of wastewater underfunding impacting the economy and environment



“This [wastewater] infrastructure presents a risk to both public health and the environment, consequently failure to invest and improve it, will result in continued deterioration of water quality in Northern Ireland and non-compliance of regulatory standards and requirements.”

Our shareholder has notified us that they will not be able to provide the funding determined necessary



Investment shortfall of up to £0.8bn puts a halt to wastewater recovery

Causeway Coast & Glens Borough Council's Ambitions LDP



Causeway Coast and Glens Borough Council
Local Development Plan 2030
Preferred Options Paper

Causeway Coast & Glens Borough Council Local Development Plan 2035 (revised)

Vision – A vibrant and innovative economy, sustainably delivering health and well-being and high quality built and natural environments, for all citizens and visitors to the Borough.

Settlement Classifications within the Borough –

- Main Hubs: Coleraine and Limavady.
- Local Hubs: Ballycastle and Ballymoney
- Towns: Ballykelly, Bushmills, Cushendall, Dungiven, Garvagh, Kilrea, Portrush, Portstewart.
- Villages: 25 Villages
- Small Settlements: 34 small settlements, spread across the remainder of the Borough.

Social Development Objectives, Accommodating People and Facilitating Communities
Growth figure until 2030 (for the length of the plan period) with a total allocation of 9,270 dwellings.

Economic Development, Objectives Creating Jobs and Promoting Prosperity
6,000 to 8,600 new jobs will be required.

2024/25 Planned PC21 Key Capital Investments in Water & Wastewater



Project Name	PC21 Year 4 Investment (2024-2025) £m
Northern Water Resource Zone Resilience	0.588
Watermains Improvement Phase 2 Ballinrees Limavady Work Package	0.061
Craig Park Service Reservoir (SR) Inlet Main	0.863
Corrody SR to Creggan SR Transmission main replacement	0.333
Caugh Hill Water Treatment Works (WTW) Treatability Improvements	0.127
Caugh Hill WTW PC21 Improvements	0.700
Caugh Hill WTW - Pilot Plant Study	0.150
Ballinrees WTW Upgrade	6.948
Ballinrees WTW Filter Investigations and Instrumentation	0.448
Kilrea WwTW	4.032
Aghanloo WwTW	2.449
Limavady Catchment Upgrade To Address New Development & External Flooding	1.215
North Coast Drainage Area - Ballycairn Storm Overflow CAI Playing Fields	0.992
Bushmills DA Priestland Road	0.698
Corrymeela Community, sewer Extension	0.143
Portmore Road Flood Alleviation DG5	0.104

Causeway Coast & Glens Borough Council

Specific areas affected within your Council area will be impacted by capacity issues. These are attributable to:

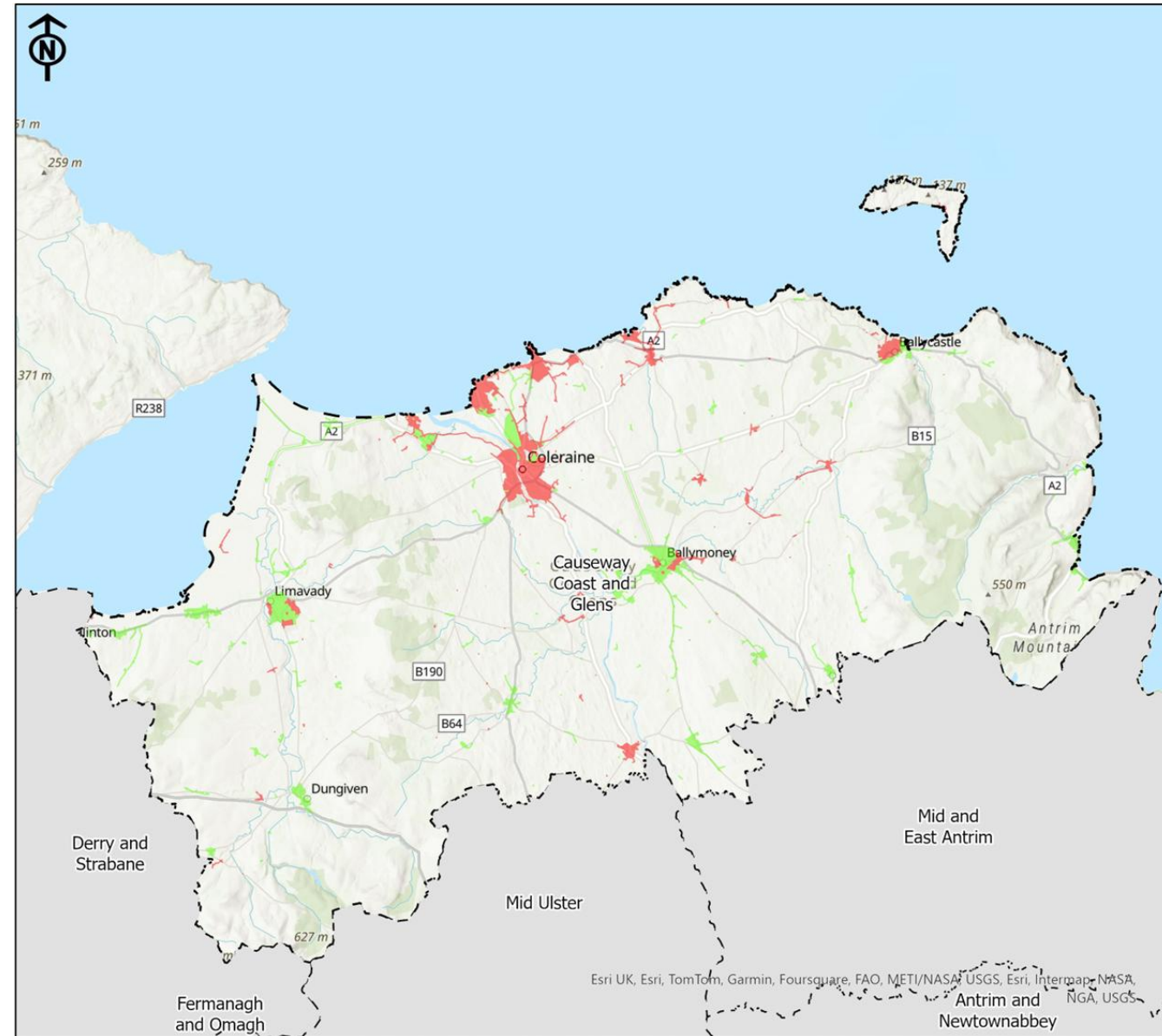
- The Wastewater Treatment works and/or the sewer network within the catchment is operating at or over its design capacity.
- Lack of availability funding to undertake the required capital upgrades to existing assets.

The following experience network constraints:

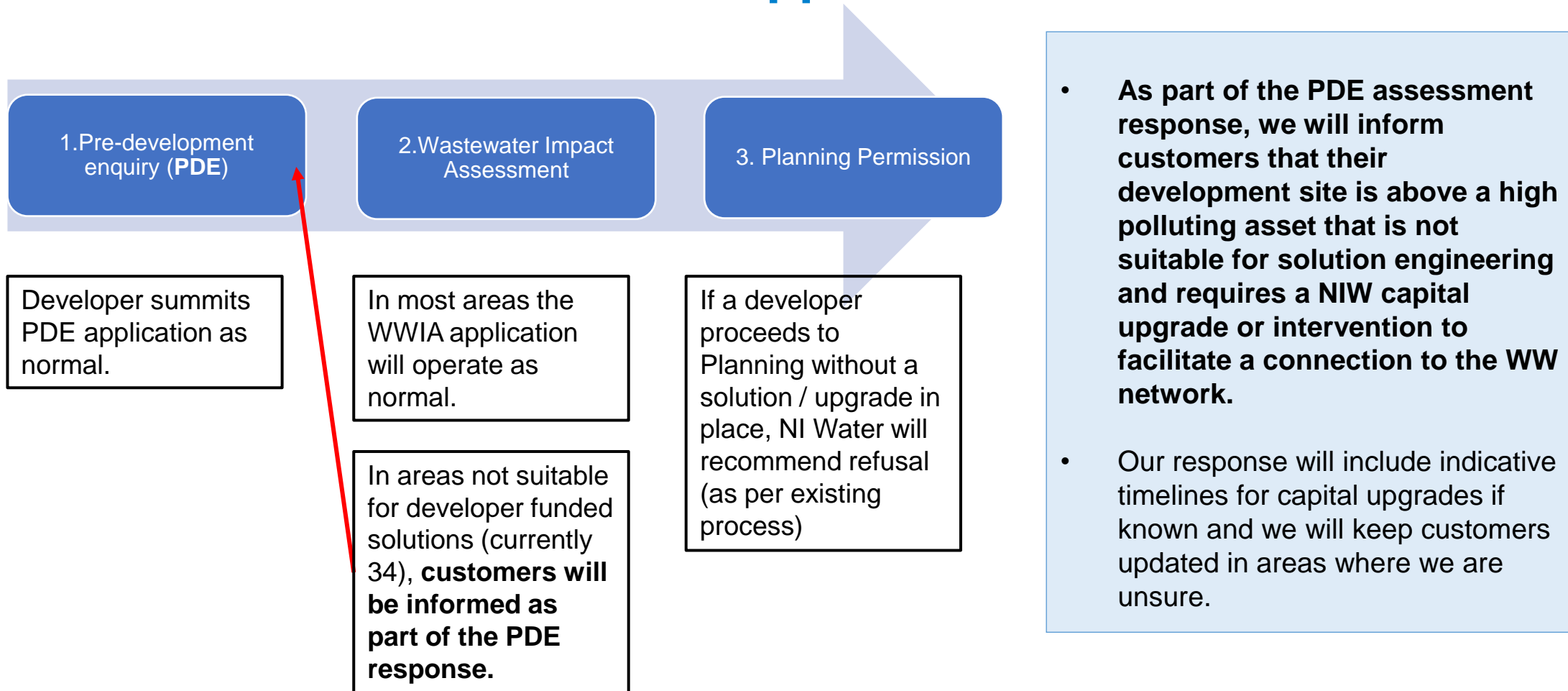
Ballintoy, Ballymoney, Coleraine, Dungiven, Kilrea, Limavady.

WwTW over 250 PE currently at Capacity:

Armoy, Carrowclare, Clarehill, Dervock, Moss side (Ballymoney), Stranocum.



Pre-Development Process - proposed approach to new wastewater assessment applications

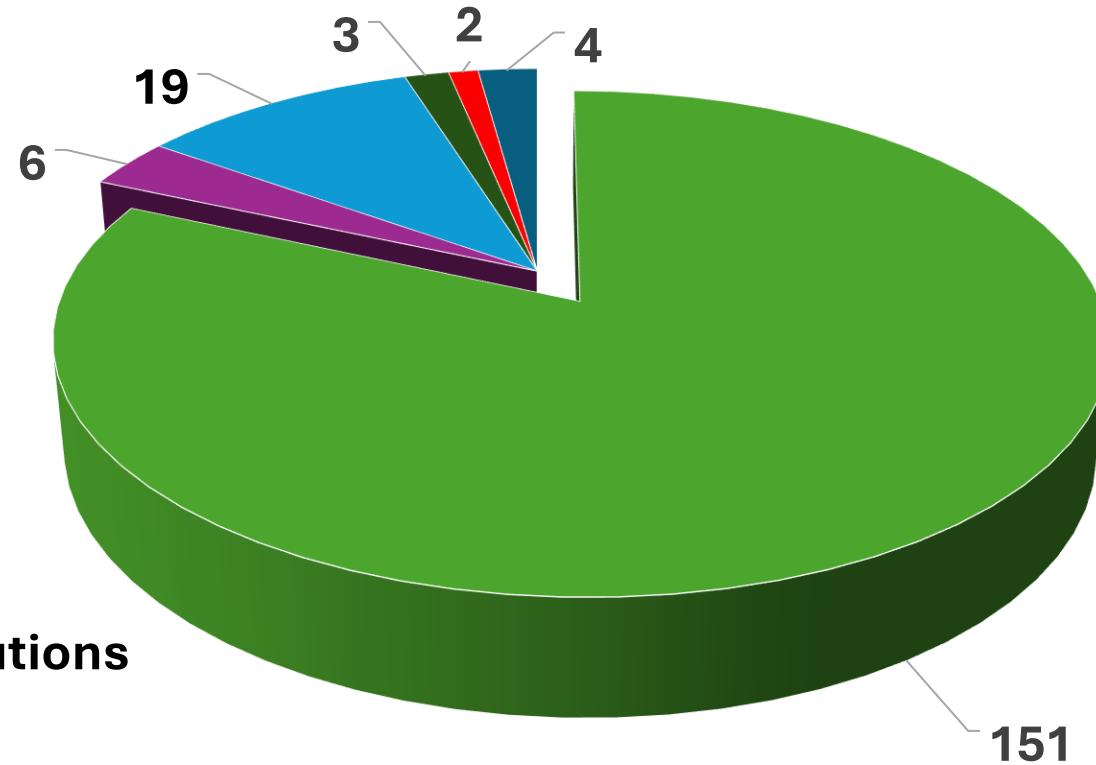


Note: Brownfield applications without an increase in foul flow will proceed as normal.

Wastewater Impact Assessments

Causeway Coast and Glens Borough Council

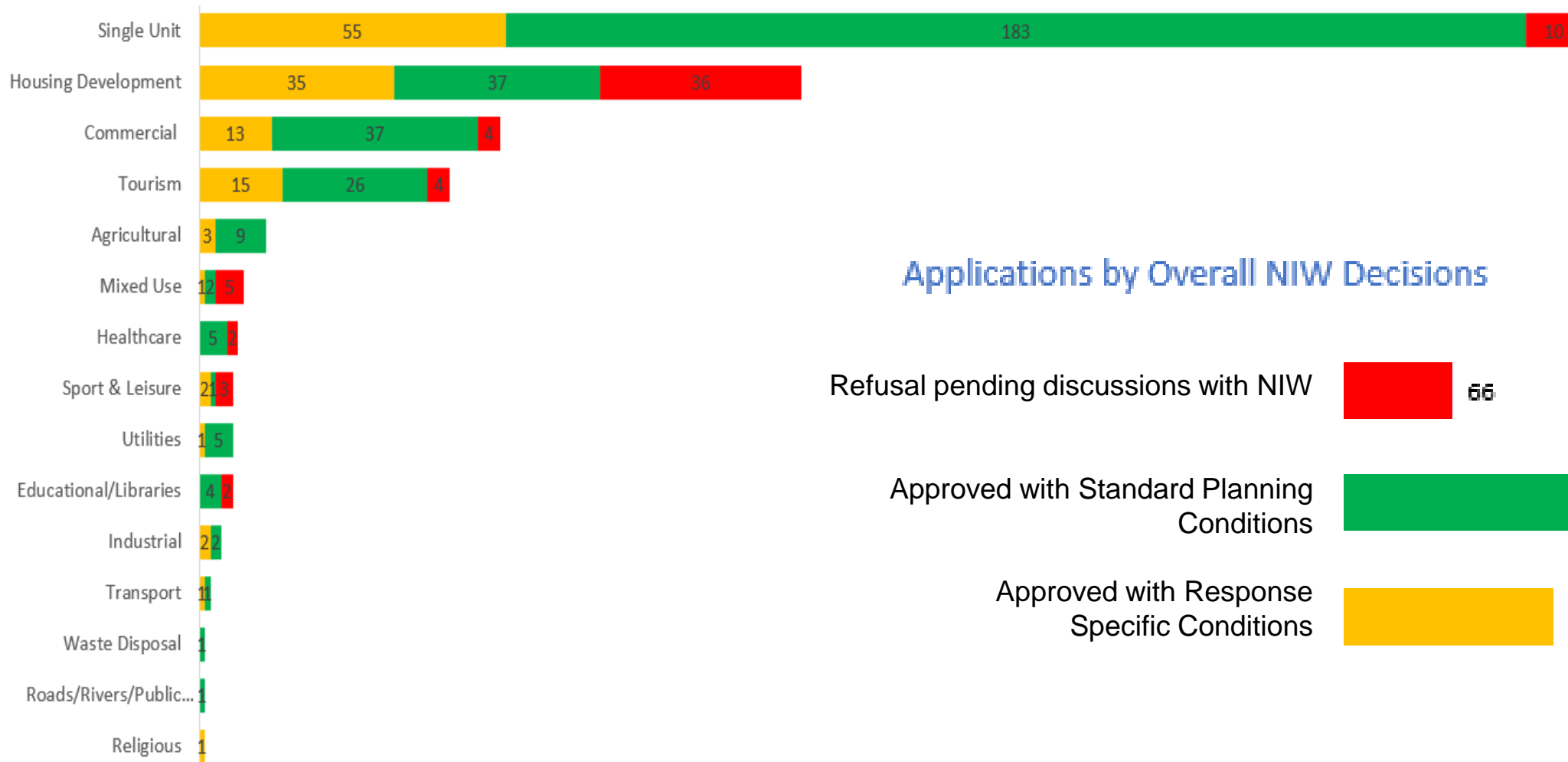
Solution Report or Letter issued



- WwIA Reports Issued - Solutions
- Package WwTW
- Like for Like
- Not Required
- No Solution
- WwIA Open - In process

Causeway Coast & Glens Borough Council: Planning Application Statistics – January 2024 to December 2024

Applications by Classification



number of applications

509

Applications by Overall NIW Decisions

Refusal pending discussions with NIW



66

Approved with Standard Planning
Conditions



314

Approved with Response
Specific Conditions



129

Summary

A permanent funding solution is required.

- Short-term injections of surplus money are unsuitable for funding of critical infrastructure.
- NI Audit Office Report (March 2024) called for *‘a comprehensive review of alternative funding and governance arrangements for NI Water led by suitable qualified experts.*
- Existing independent economic regulatory process has clearly set out the funding required yet the certainty of investment is not in place.
- Without change to the wastewater system Northern Ireland faces:
 - a permanent future of higher levels of pollution
 - severe constraints on our ability to build new homes
 - putting off new investors and slowing development of existing businesses.

THANK YOU

niwater



Delivering what matters

