



Causeway
Coast & Glens
Borough Council

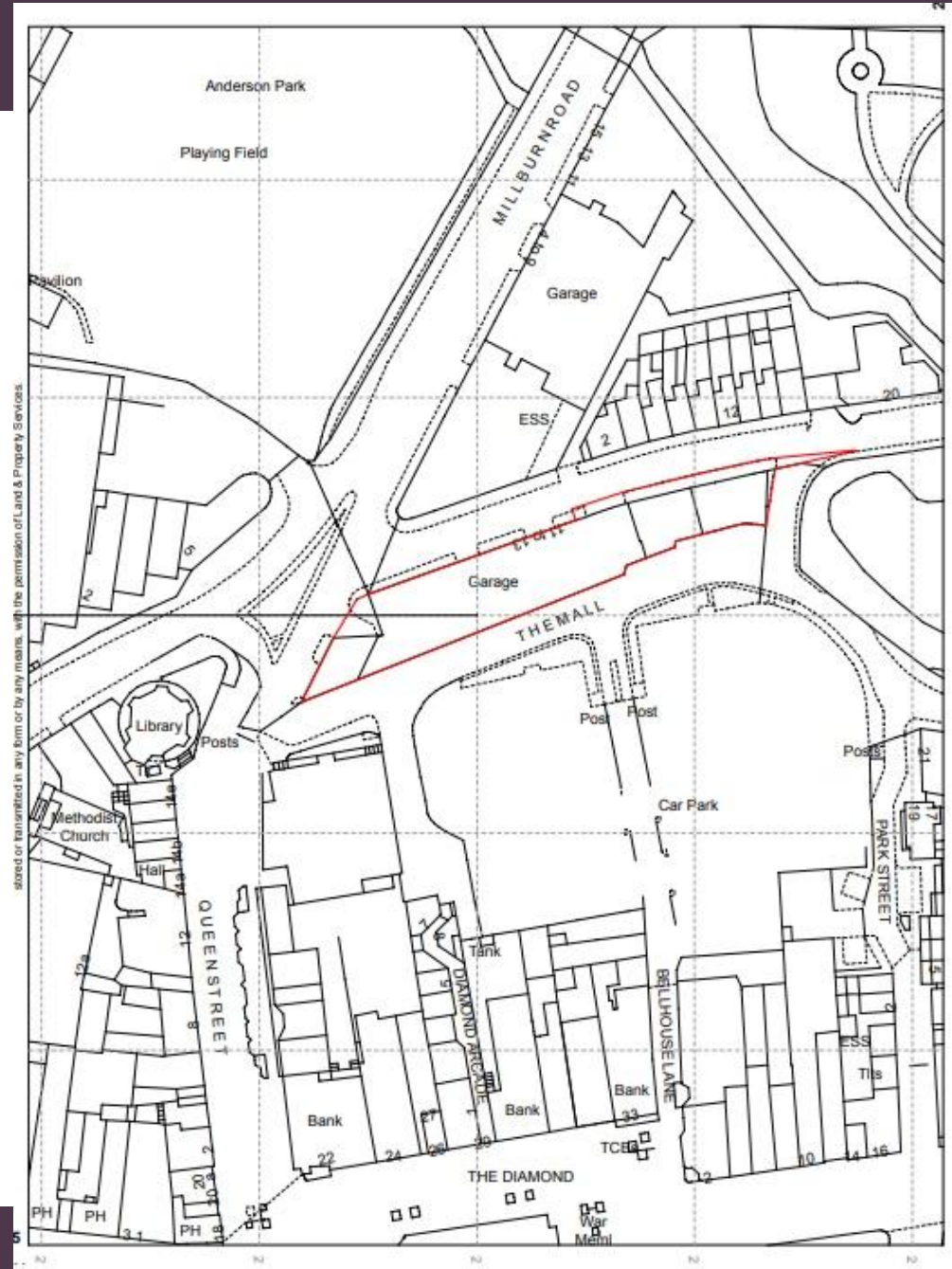
LA01/2023/0954/F

26no. Apartments (including 2no. Wheelchair accessible), scooter store, cycle store & bin store.
Communal open space & 6no. Car parking spaces.

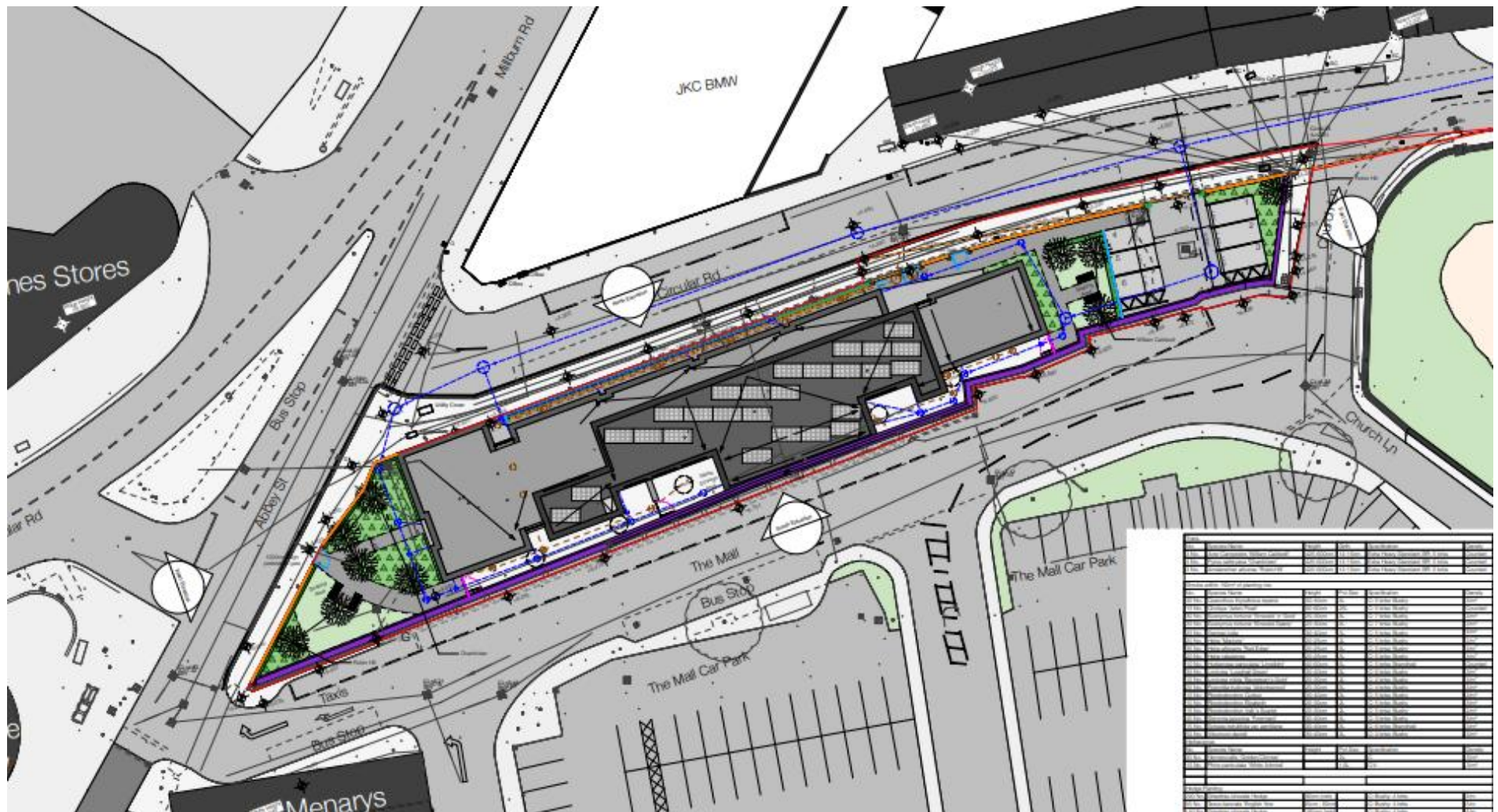
Land South of & Opposite 2-14 Circular Road & North of The Mall car park, Coleraine



Site Location Plan



Proposed Site Layout





Proposed Elevations



North Elevation
1:100



South Elevation
1:100



East Elevation
1:100



West Elevation
1:100

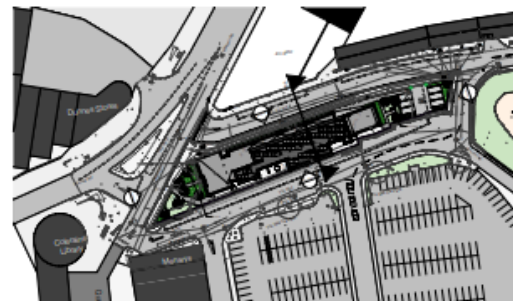
See 01. Annotations to floor plan, 01/16 accessible unit to ground floor plan, 01/20 GA with to upper floor, 20/20/22

HALL BLACK DOUGLAS

Address: 102 Alford Road Belfast BT9 6BB	Project: Circular Road, Caterham	Drawing Title: Proposed Elevations Sheet 1	Scale: B1 1:100
Architect: Riddick & Douglas 028 90 00 0001	Client: Radix Housing	Drawing No: 1120-HBD-21-22-GL-A-04-110-00	Date: 17 Nov 22 Drawn/CDA DP / JSB



Proposed Site Elevations & Sections






- Brick
- Brick feature panel stack bond brick
- Dark cladding material
- Light cladding material

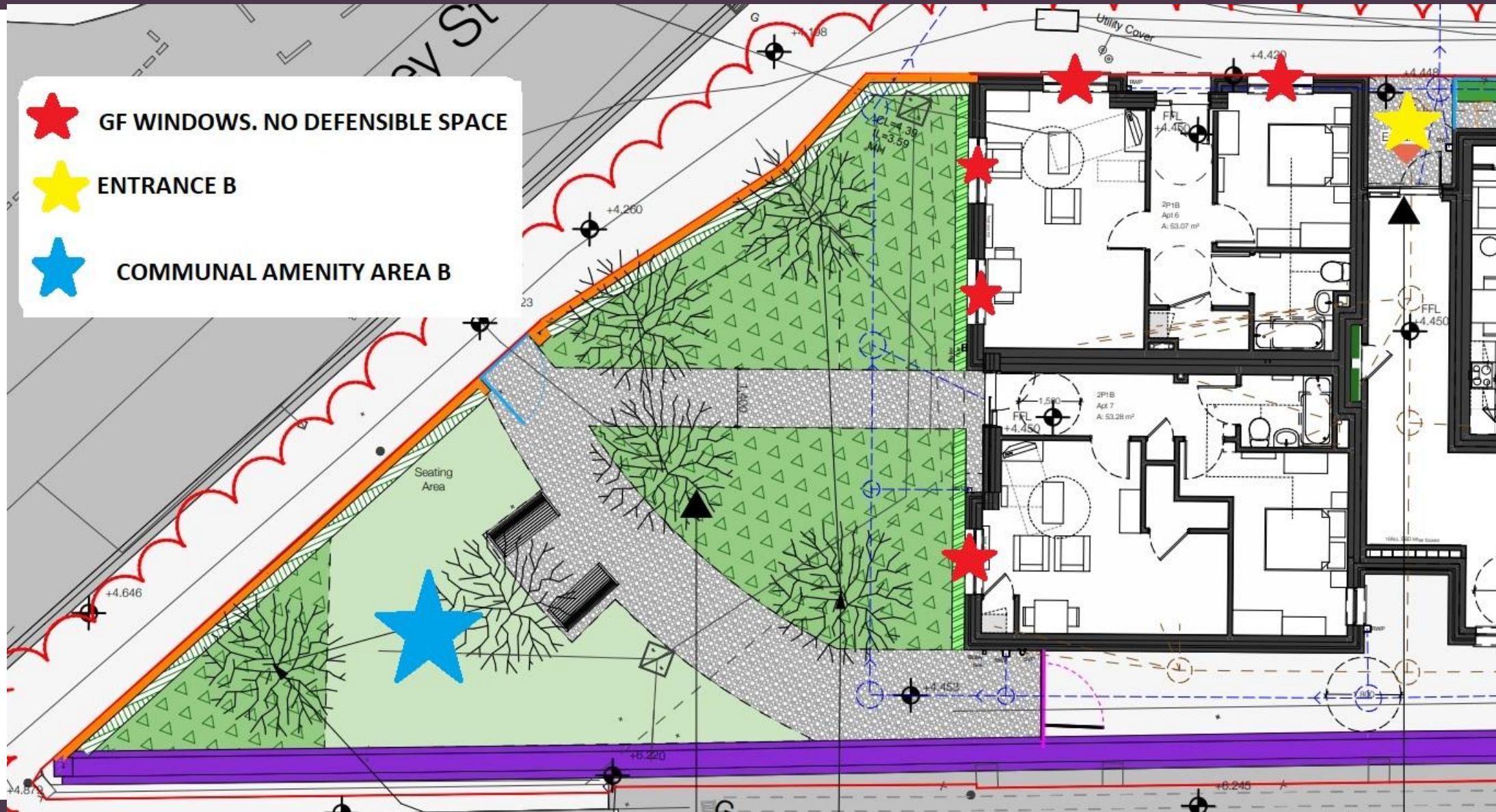


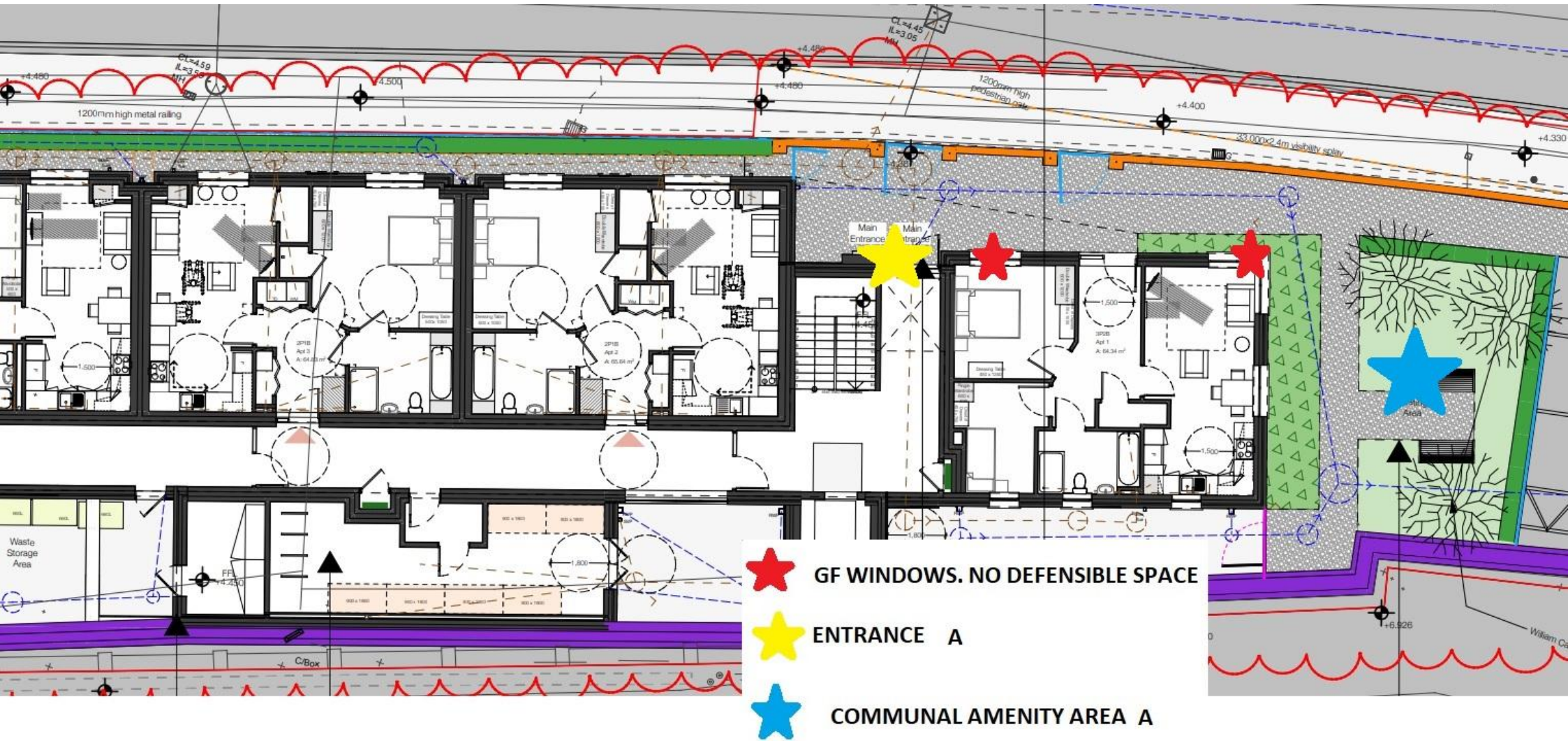
07	2 new hedging types added. One 180cm (6ft) hedge to all with acoustic and screening (West portion of site).	13.04.20	CP	DB
08	Brick type revised to planning comments.	05.03.20	CP	DB
09	SBD and planning revisions as noted on proposed site plan page.	16.11.20	CP	DB
04	SBD revisions.	20.07.20	CP	DB
02	Amendment to floor plan, 2P18 accessible unit to ground floor plan, 2P18 DA units to upper floors.	26.03.20	PC	CP
03	Co-ordination.	21-09-20	PC	CP
01	Building and marking reduced following PWD comments.	21	PC	CP
NL	AMENDMENT	DATE	BY	CHECKED



Causeway
Coast & Glens
Borough Council

-  GF WINDOWS. NO DEFENSIBLE SPACE
-  ENTRANCE B
-  COMMUNAL AMENITY AREA B







Causeway
Coast & Glens
Borough Council





Causeway
Coast & Glens
Borough Council

LISTED BUILDING

APP SITE





Causeway
Coast & Glens
Borough Council





Causeway
Coast & Glens
Borough Council



PUBLIC OPEN SPACE

CAR PARK

APP SITE

