



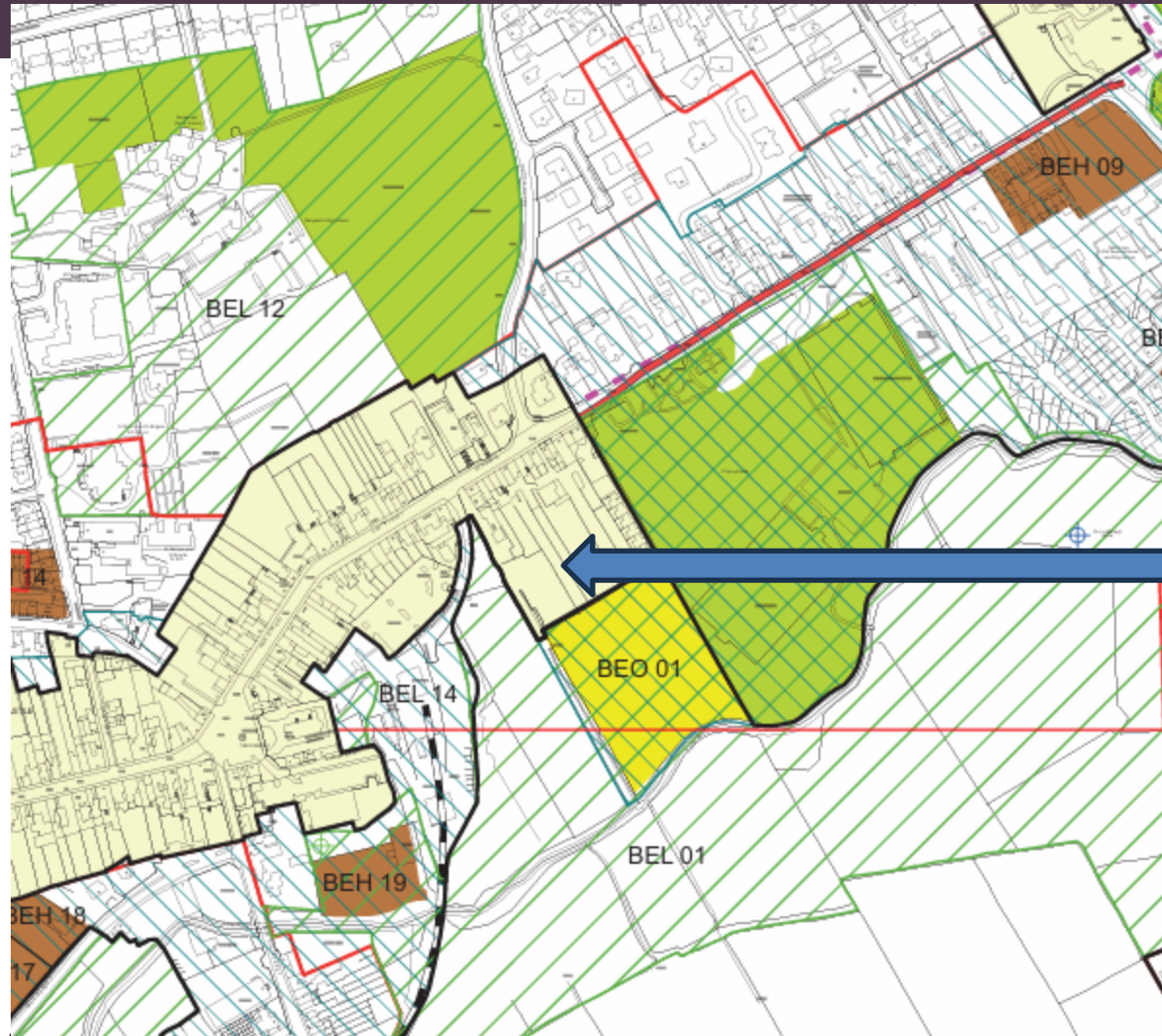
Causeway
Coast & Glens
Borough Council

LA01/2024/0096/F

Residential development - 4 no. semi detached dwellings

Lands south of No. 5-14 Bleachgreen Apartments, off Ann Street, Ballycastle





Northern Area Plan 2016



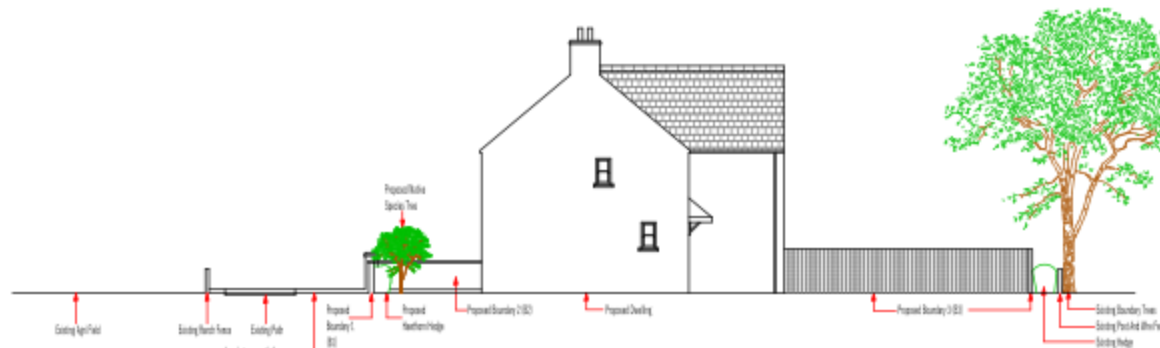




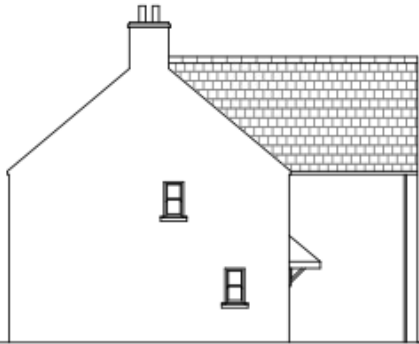
STREETSCAPE X-X TO BLEACH GREEN 1:200 SCALE



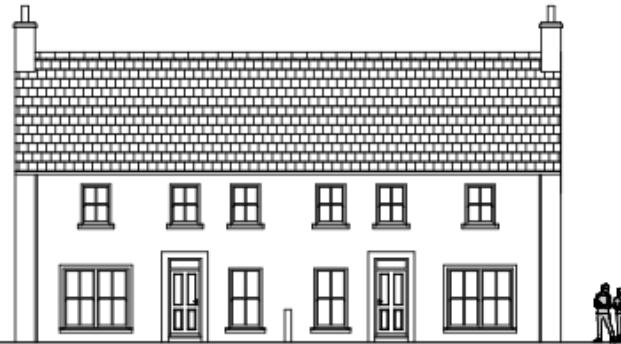
SITE SECTION Y-Y 1:200 SCALE



TYPICAL SECTION Z-Z SHOWING BOUNDARIES 1:100 SCALE

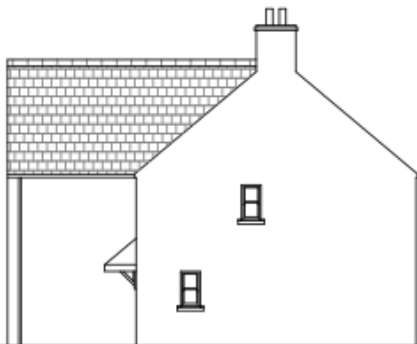


SIDE ELEVATION 1



FRONT ELEVATION

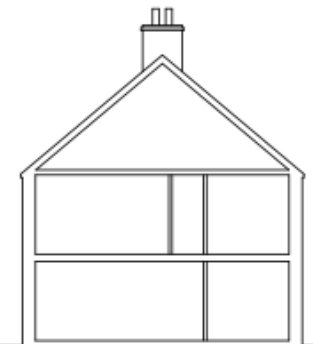
FINISHES.
Natural Slate Roof
Block Eaves
Black Rounded UPVC Rainwater goods
Smooth Plaster Render Painted.
Hardwood Sliding Sash Windows Painted
Hardwood External Doors Painted



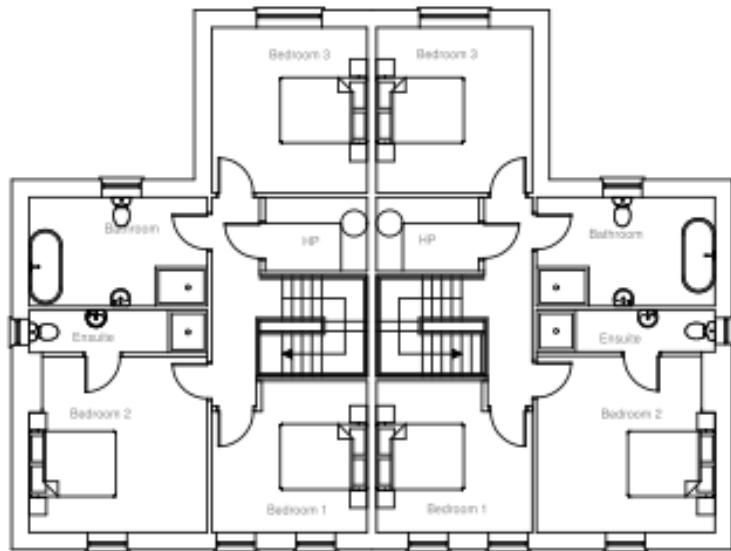
SIDE ELEVATION 2



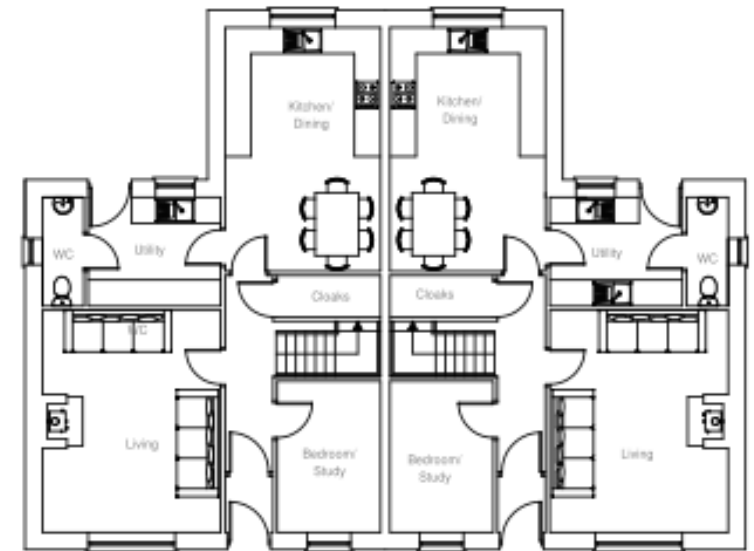
REAR ELEVATION



SECTION



FIRST FLOOR PLAN



GROUND FLOOR PLAN



Causeway
Coast & Glens
Borough Council





Causeway
Coast & Glens
Borough Council





Causeway
Coast & Glens
Borough Council





Causeway
Coast & Glens
Borough Council





Causeway
Coast & Glens
Borough Council





Causeway
Coast & Glens
Borough Council





Causeway
Coast & Glens
Borough Council

