



Causeway
Coast & Glens
Borough Council

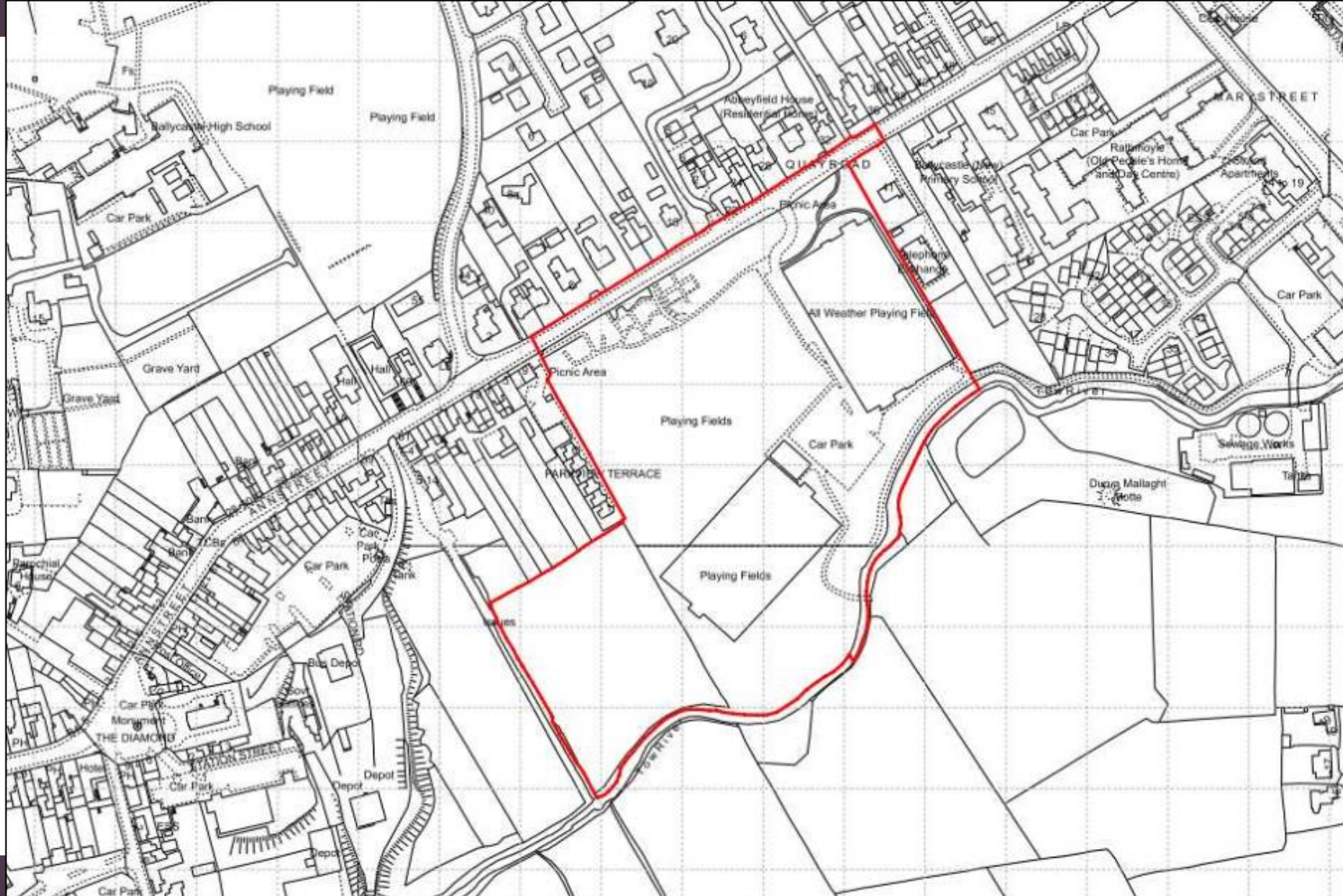
LA01/2024/1213/A

Development of 7 x Leisure Centre signage- 1 x wall mounted building signage (illuminated), 2 x ground mounted totem signage (illuminated), 3 x ground mounted directional signage and 1 x assistance dogs toilet facility signage.

Site: Land between 13-39 Quay Road, Ballycastle .

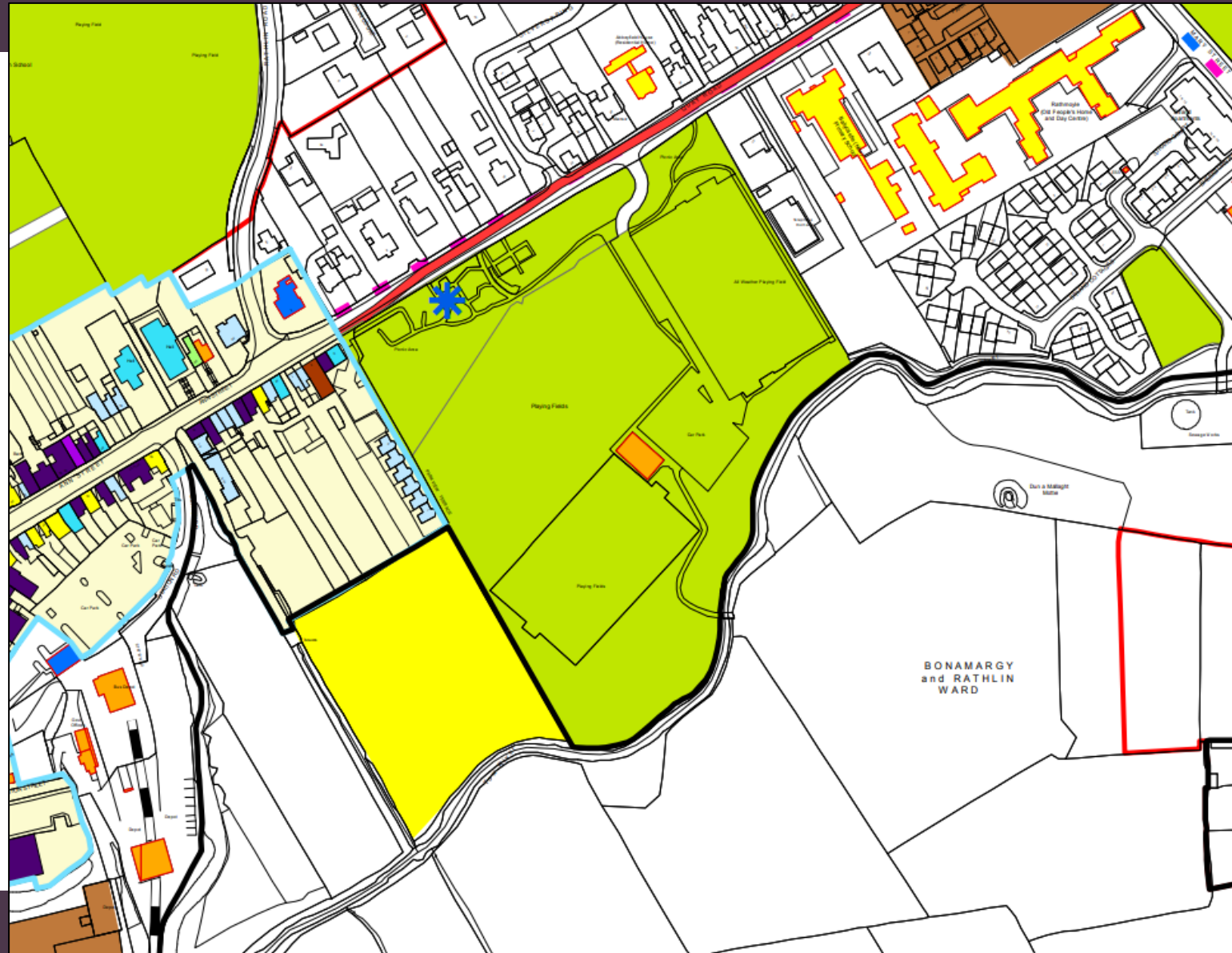


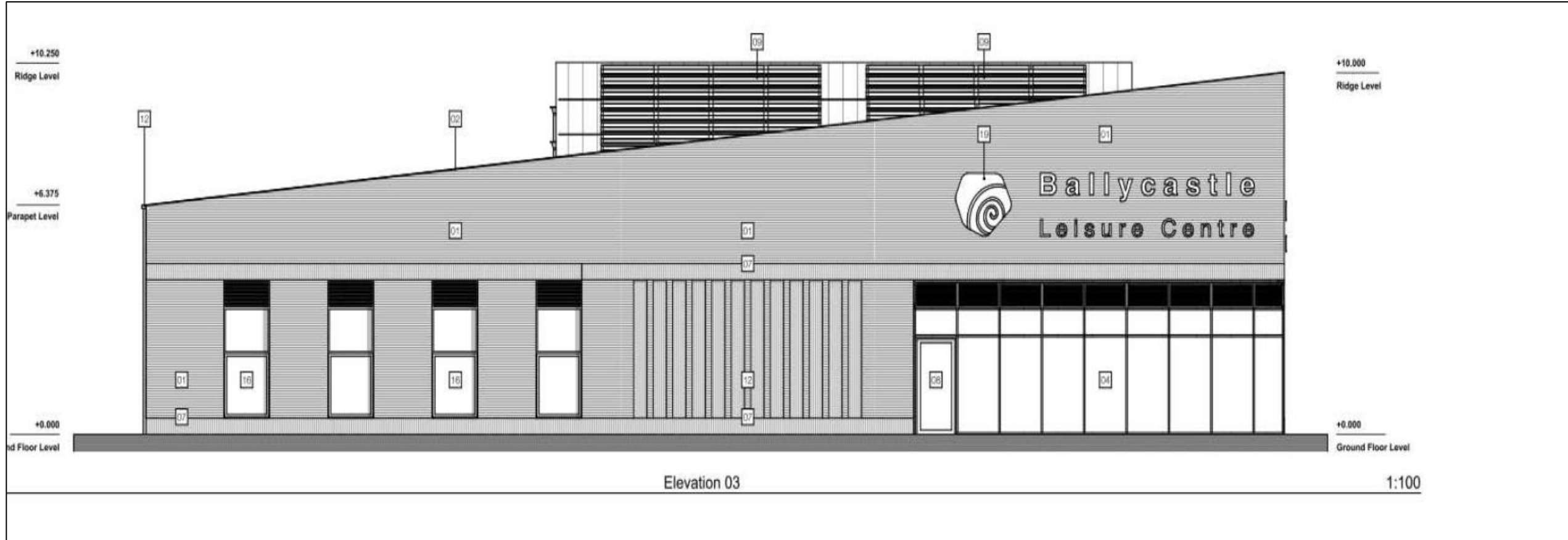
Causeway Coast & Glens Borough Council





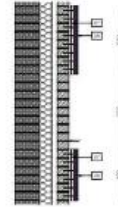
Causeway
Coast & Glens
Borough Council







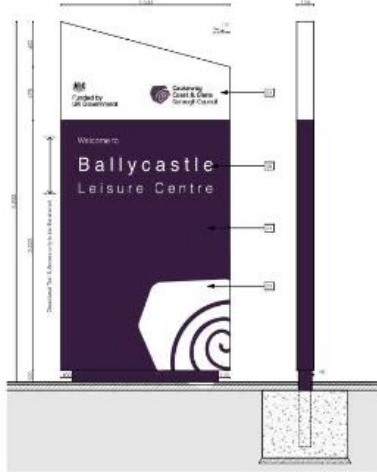
Ballycastle Leisure Centre



TYPE 01 - OFFSHORE MOUNTED SYSTEM SIGNAGE - 4000mm
 4000mm HIGH x 2000mm WIDE x 1000mm DEPTH (SEE PLAN)
 For details of signage construction, material specifications, finishes, lighting and details, please refer to the project specification and the relevant drawings.
 For further information, please contact the project manager.
 For further information, please contact the project manager.
 For further information, please contact the project manager.



Proposed Front Elevation

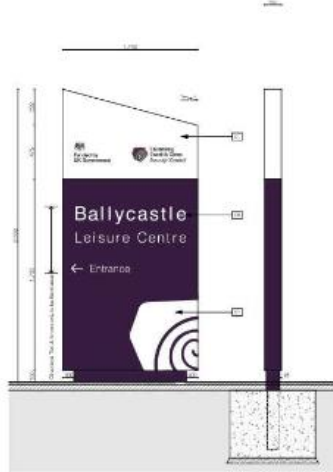


Proposed Front Elevation & Typical Section

TYPE 02 - OFFSHORE MOUNTED SYSTEM SIGNAGE - 4000mm
 4000mm HIGH x 2000mm WIDE x 1000mm DEPTH (SEE PLAN)
 For details of signage construction, material specifications, finishes, lighting and details, please refer to the project specification and the relevant drawings.
 For further information, please contact the project manager.
 For further information, please contact the project manager.
 For further information, please contact the project manager.

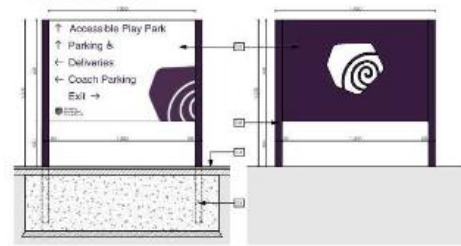


Proposed Front Elevation

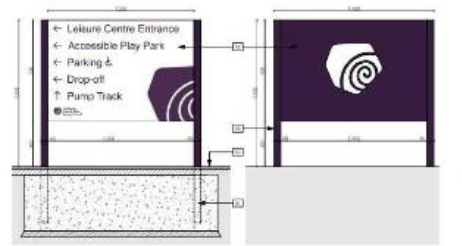


Proposed Front Elevation & Typical Section

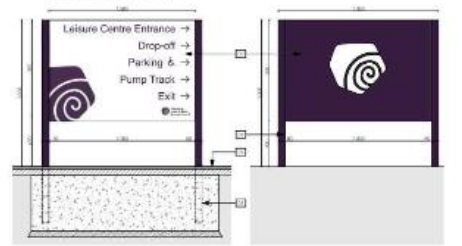
TYPE 03 - POST & RAIL MOUNTED SYSTEM SIGNAGE - 4000mm
 4000mm HIGH x 2000mm WIDE x 1000mm DEPTH (SEE PLAN)
 For details of signage construction, material specifications, finishes, lighting and details, please refer to the project specification and the relevant drawings.
 For further information, please contact the project manager.
 For further information, please contact the project manager.
 For further information, please contact the project manager.



TYPE 04 - CANOPY MOUNTED SYSTEM SIGNAGE - 4000mm
 4000mm HIGH x 2000mm WIDE x 1000mm DEPTH (SEE PLAN)
 For details of signage construction, material specifications, finishes, lighting and details, please refer to the project specification and the relevant drawings.
 For further information, please contact the project manager.
 For further information, please contact the project manager.
 For further information, please contact the project manager.



TYPE 05 - CANOPY MOUNTED SYSTEM SIGNAGE - 4000mm
 4000mm HIGH x 2000mm WIDE x 1000mm DEPTH (SEE PLAN)
 For details of signage construction, material specifications, finishes, lighting and details, please refer to the project specification and the relevant drawings.
 For further information, please contact the project manager.
 For further information, please contact the project manager.
 For further information, please contact the project manager.

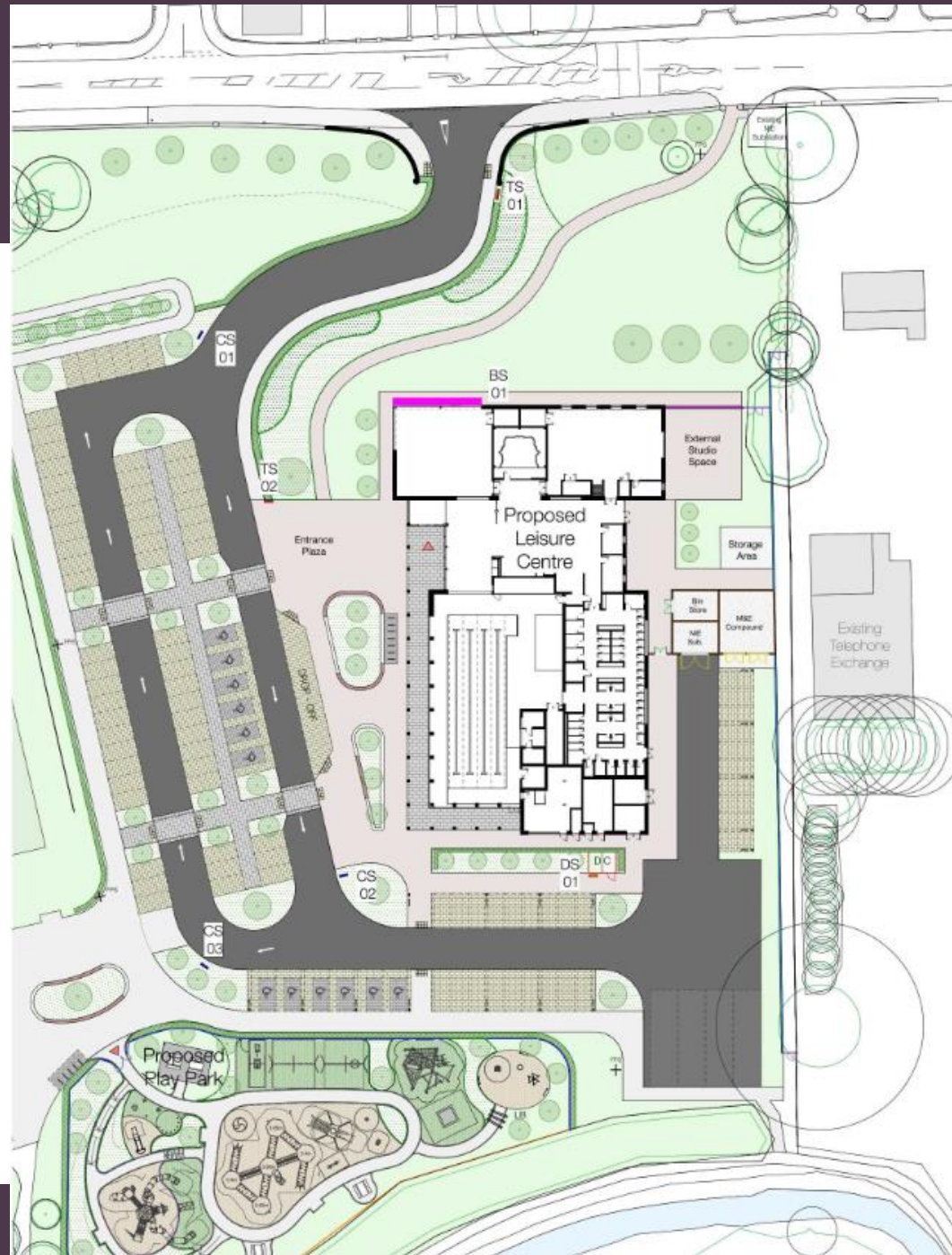


TYPE 06 - WALL MOUNTED SYSTEM SIGNAGE - 4000mm
 4000mm HIGH x 2000mm WIDE x 1000mm DEPTH (SEE PLAN)
 For details of signage construction, material specifications, finishes, lighting and details, please refer to the project specification and the relevant drawings.
 For further information, please contact the project manager.
 For further information, please contact the project manager.
 For further information, please contact the project manager.





Causeway
Coast & Glens
Borough Council





Causeway
Coast & Glens
Borough Council





Causeway
Coast & Glens
Borough Council

