



Causeway
Coast & Glens
Borough Council

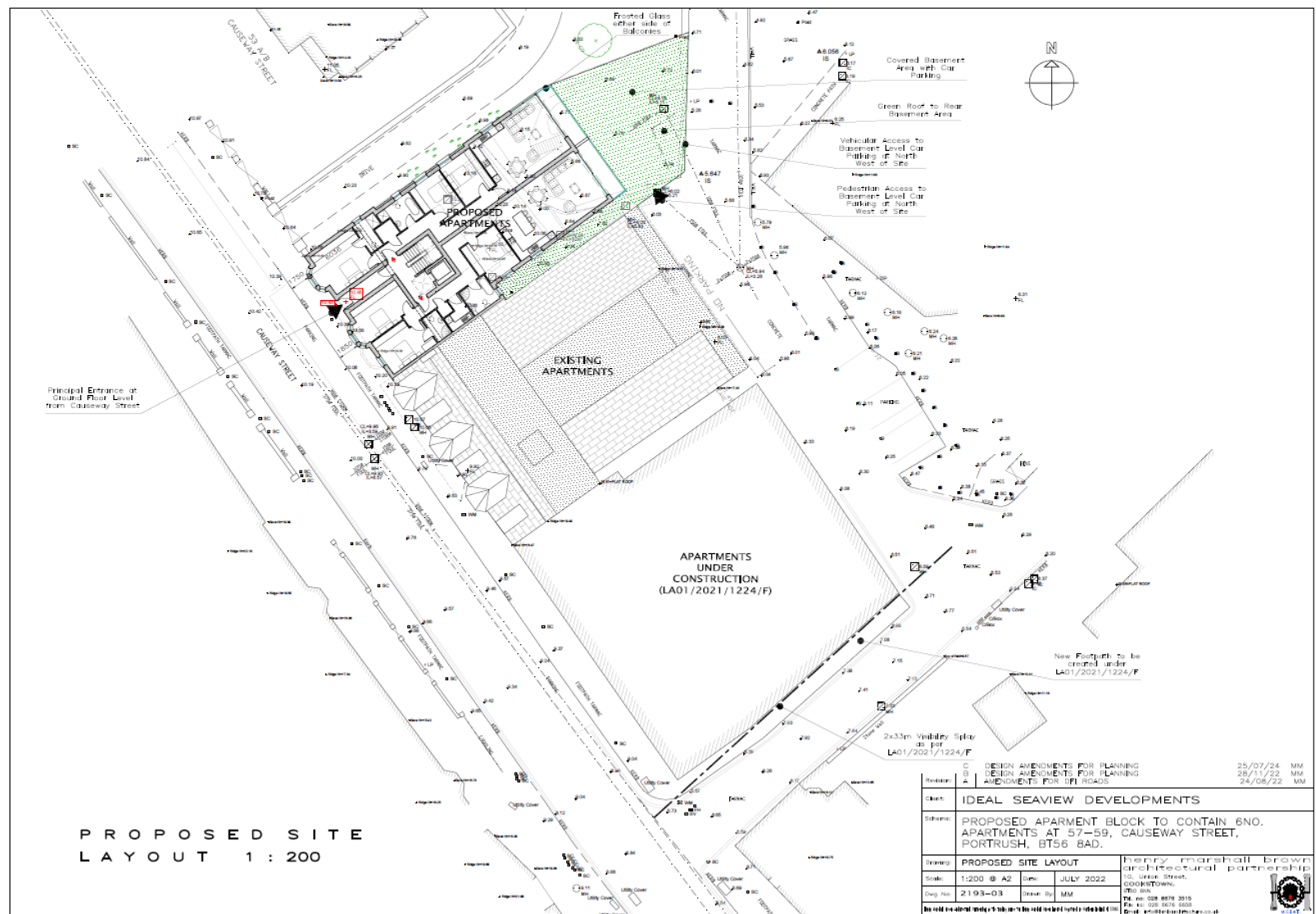
LA01/2022/0791/F

Full Planning Application for residential apartment scheme comprising 6no apartments, landscaping, access off Causeway Street and ancillary works.

57-59 Causeway Street Portrush

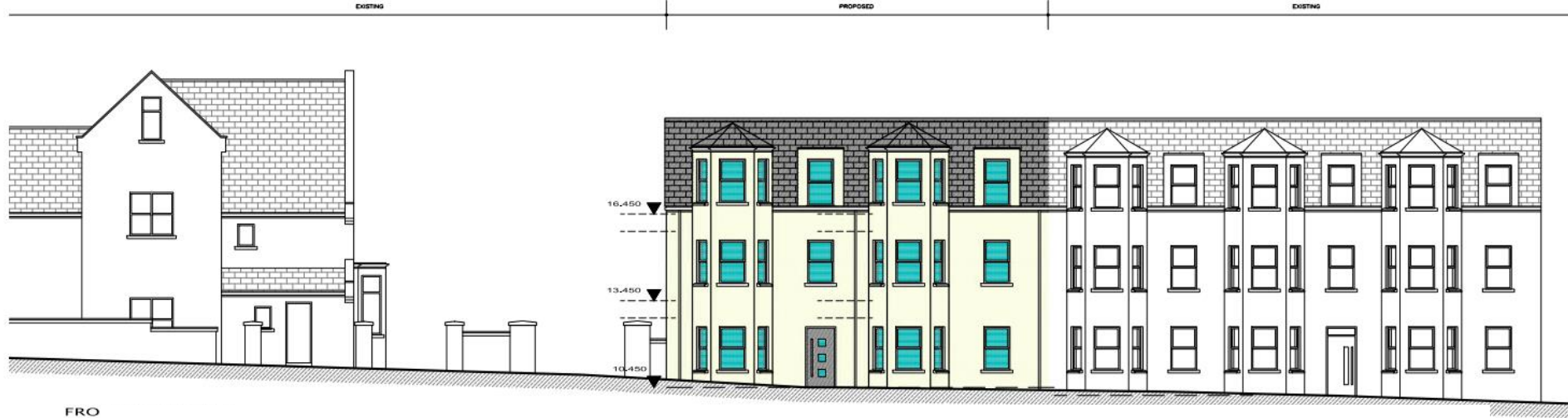


Causeway Coast & Glens Borough Council





Causeway Coast & Glens Borough Council



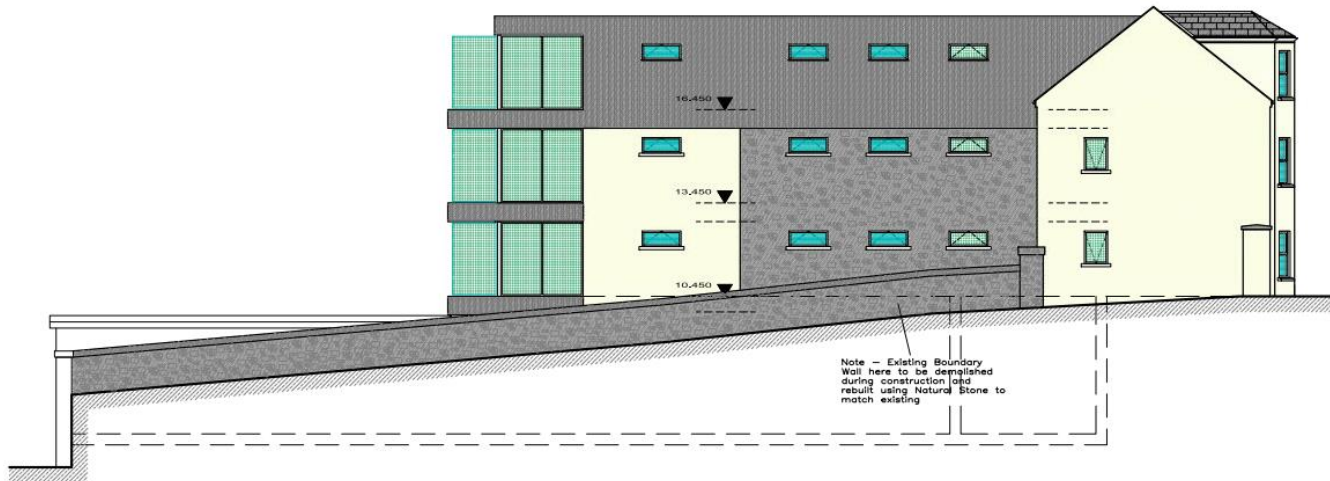
FRO

All Windows here to be Fixed Shut with Frosted Glazing

All Windows here to be Openable, High-Level Windows with non-obscured glazing

Bathroom Window here to be Openable, High-Level with Frosted Glazing

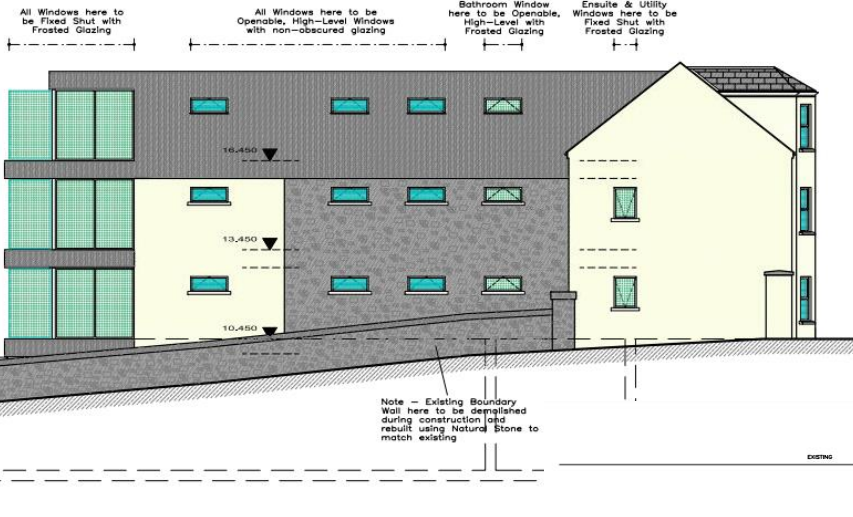
Ensuite & Utility Windows here to be Fixed Shut with Frosted Glazing



SIDE ELEVATION

FINISHES :-

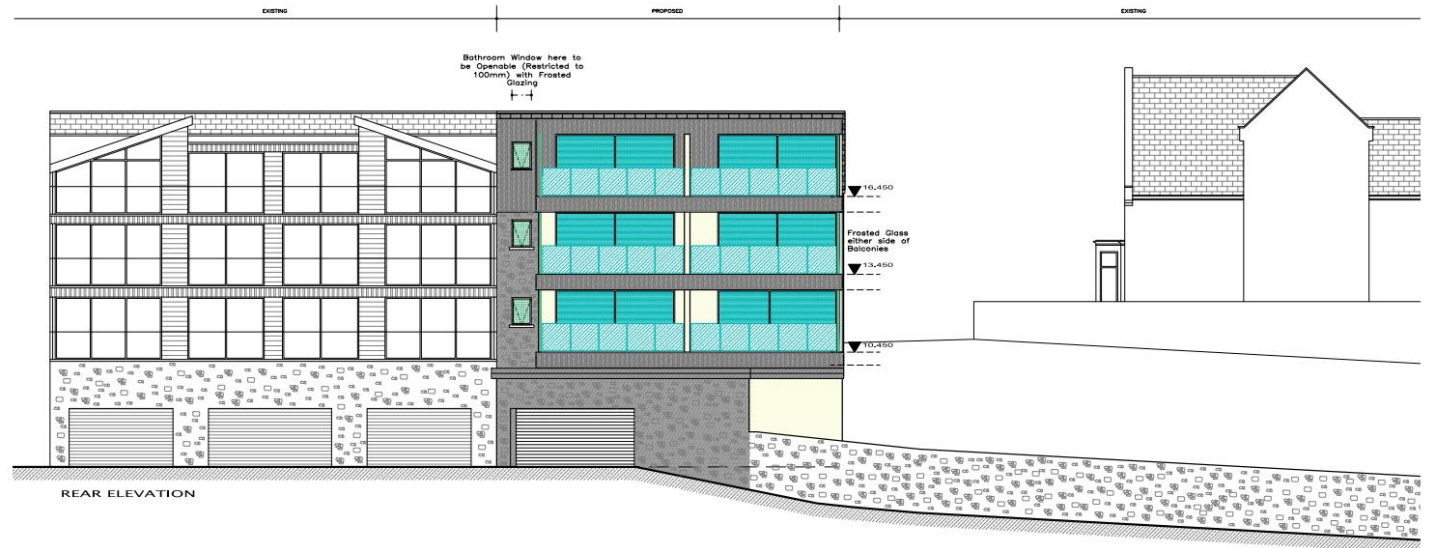
- ROOF:** Natural Slates to Pitched Roof, Dark Grey Aluminium Standing Seam to Flat Roof.
- WALLS:** Render to Agreed Colour, Natural Stone Cladding.
- WINDOWS:** Dark Grey uPVC & Aluminium Double Glazed Windows.
- GUTTERS:** Black uPVC Box Guttering with 63mm Round Downpipes.



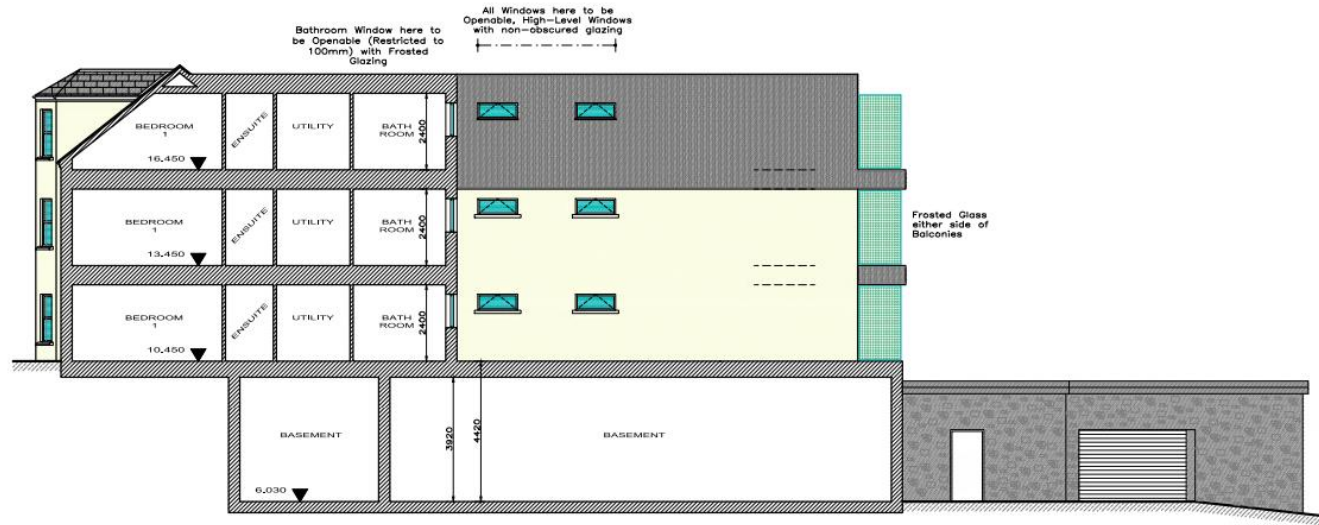
SIDE ELEVATION

FINISHES :-

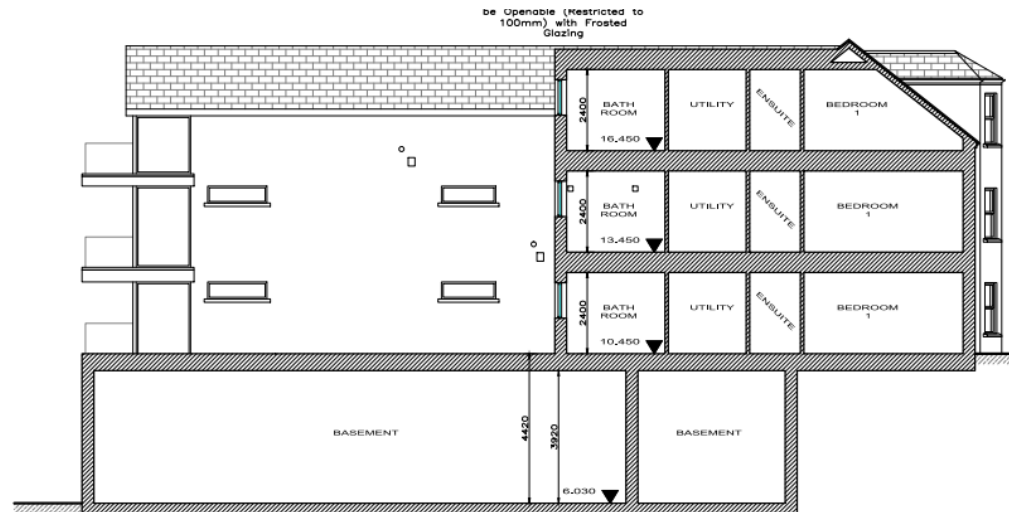
- ROOF:** Natural Slates to Pitched Roof, Dark Grey Aluminium Standing Seam to Flat Roof.
- WALLS:** Render to Agreed Colour, Natural Stone Cladding.
- WINDOWS:** Dark Grey uPVC & Aluminium Double Glazed Windows.
- GUTTERS:** Black uPVC Box Guttering with 63mm Round Downpipes.



REAR ELEVATION



SECTIONAL ELEVATION



SECTIONAL ELEVATION



Causeway
Coast & Glens
Borough Council





Causeway
Coast & Glens
Borough Council





Causeway
Coast & Glens
Borough Council





Causeway
Coast & Glens
Borough Council

