

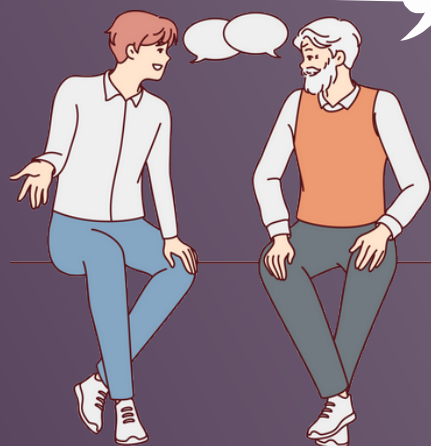
Where you have ANY Safeguarding concern, you should immediately bring it to the attention of ANY member of staff at the facility you are using or as soon as possible thereafter.

Be aware of any person behaving suspiciously

Otherwise in an emergency contact the police on 999.



*If you think it's odd  
it probably is!*  
**Tell any Member  
of Staff**



## USEFUL CONTACT NUMBERS

### POLICE

028 703 44122 (Coleraine Exchange) or  
028 9065 0222 (Limavady)  
ask for Community Safety Officer or Duty  
Sergeant

Gateway Team; **Children & Young People**  
(Monday – Friday, 9am – 5pm, excluding public  
holidays)  
Northern Trust area: 0300 1234 333 or 028 9442  
4459

Western Trust area: 028 7131 4090  
Regional Emergency Social Work Service:  
0800 1979 995  
(Monday – Friday, 5pm – 9am, 24 hours at  
weekends and public holidays)

Gateway Team; **Adults**  
(Monday – Friday, 9am – 5pm, excluding public  
holidays)  
Northern Trust area: 028 9441 3659  
Western Trust area: 028 7161 1336

Regional Emergency Social Work Service:  
028 9504 9999  
(Monday – Friday, 5pm – 9am, 24 hours at  
weekends and public holidays)

NI Child Sexual Exploitation Helpline Number:  
0800 389 1701

**NSPCC CHILD SAFEGUARDING HELPLINE**  
(for parents and other professionals)  
0808 800 5000  
CHILDLINE (for children) 0800 1111

**DOMESTIC VIOLENCE HELPLINE**  
0808 802 1414



## SAFEGUARDING

### Children & Adults

Advice for members of the  
public using Causeway Coast  
and Glens Borough Council facilities

**Safeguarding :**  
It's everyone's  
Responsibility





## ADVICE FOR MEMBERS OF THE PUBLIC USING CAUSEWAY COAST AND GLENS BOROUGH COUNCIL FACILITIES

- A Child is anyone aged under 18 years of age.
- An Adult at Risk is anyone aged 18 years or over who could be at risk of harm due to their personal or environmental circumstances.
- An Adult in need of protection is a person aged 18 or over, whose exposure to harm through abuse, exploitation or neglect may be increased by their personal characteristics or life circumstances.

Causeway Coast and Glens Borough Council is committed to providing a range of activities that children and adults can enjoy in a happy safe environment, and has developed Safeguarding Policies to support this.

### Council's Safeguarding Policies Aims to:

- Prevent abuse of children/adults at risk by taking a zero tolerance approach.
- Put all children and adults who may be at risk at the centre of what we do.
- Encourage safe practices for those who work with children/adults at risk.
- Set out appropriate responses and procedures in the event of abuse taking place.
- Provide robust recruitment and vetting of those working with children and adults at risk.

Council's Safeguarding Policies can be found online at [causewaycoastandglens.gov.uk/safeguarding](http://causewaycoastandglens.gov.uk/safeguarding)



## Safe Place (Domestic Abuse)



Causeway Coast and Glens Borough Council proactively supports the Safe Place campaign and will provide anyone who finds themselves as a victim of Domestic Abuse with information on the support services available.



Council is a member of the National 'Leisurewatch' scheme designed to protect children and adults at risk, or in need of protection through a customer-focused mindset with public safety a top priority, where there are concerns about the behaviour of any person.

### Photography

- ANY photography is forbidden in ALL changing rooms and toilet facilities.
- Staff will challenge anyone suspected of unauthorised photography or video recording.
- Those wishing to take photographs should contact a member of staff who will advise them of the relevant authorisation process.

### Activity Supervision

When managing activities, Council will provide adequate adult to child supervision ratios as outlined in Council's Safeguarding Children Policy and Procedures



## Dropping off and Picking Up

A child or adult at risk should NOT be dropped off outside a facility but should be accompanied to the activity.

Children, under 8 years of age, or adults at risk should NOT be left unsupervised in communal or reception areas of Council facilities.

A child/adult at risk is the responsibility of their parent/guardian/or carer immediately after the activity is over.

Any child/adult at risk who is unable to go home by his/her self MUST be collected immediately at the end of the activity.

Where a child/adult at risk does not want to remain on the council facility for the duration of the activity, staff will try to contact a parent/guardian or carer.

## Use of Council Facilities by outside groups and organisations

Where council facilities are hired by a third party to host events the responsibility for the safeguarding of Children and Adults attending is with the hirer NOT the council.

It is also the hirers responsibility to ensure the necessary safeguarding policy and checks are complete.



*See something?  
Hear something?  
Say something*