



Map No. 1 - Mossie Settlement Context

Settlement Development Limit

Land Zoned for Housing

For Information Only

Major Area of Existing Open Space

Protected Route

Building Category

Commercial

Community Service

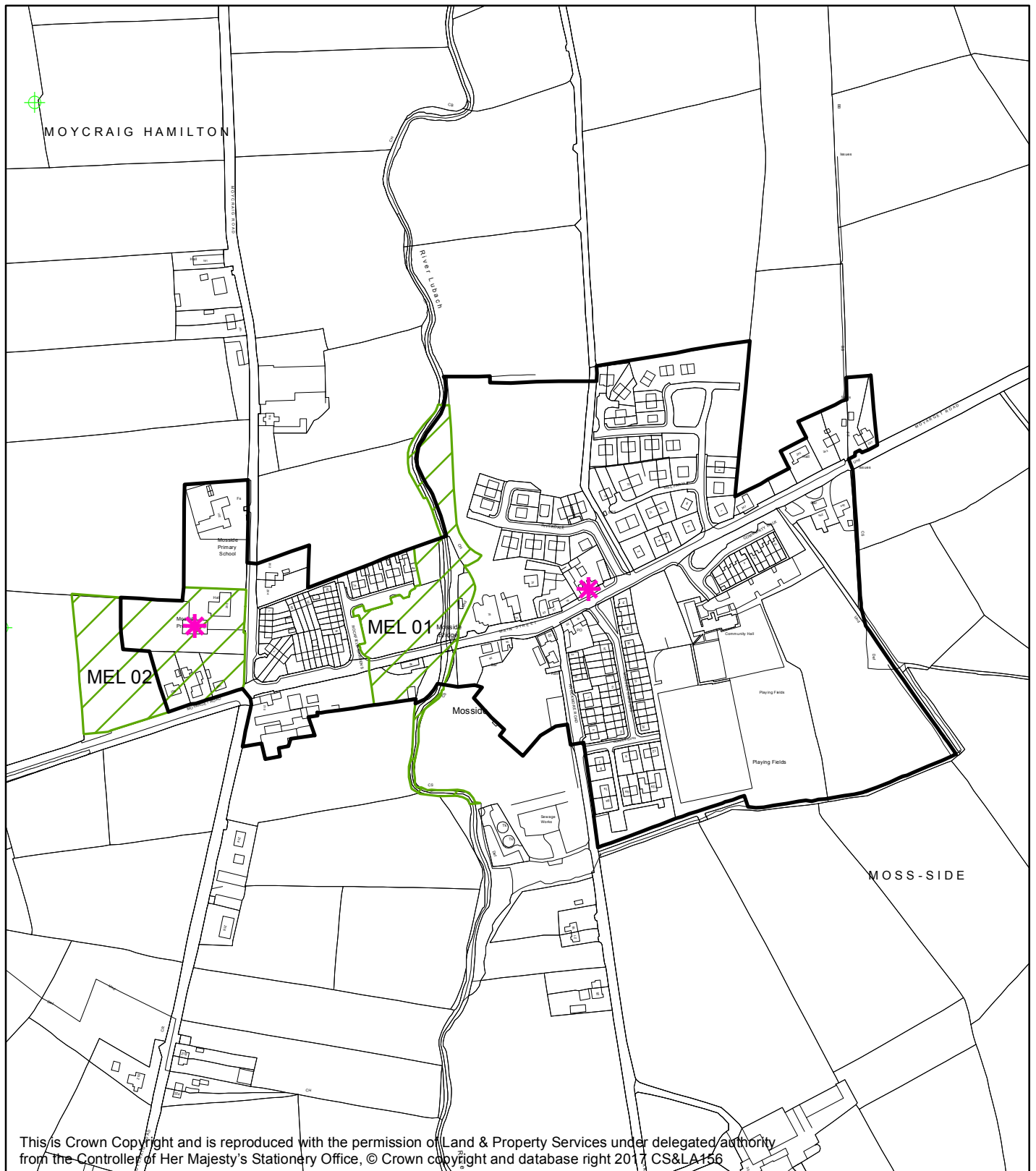
Economic

Health and Education



Play Park



0 50 100 Metres

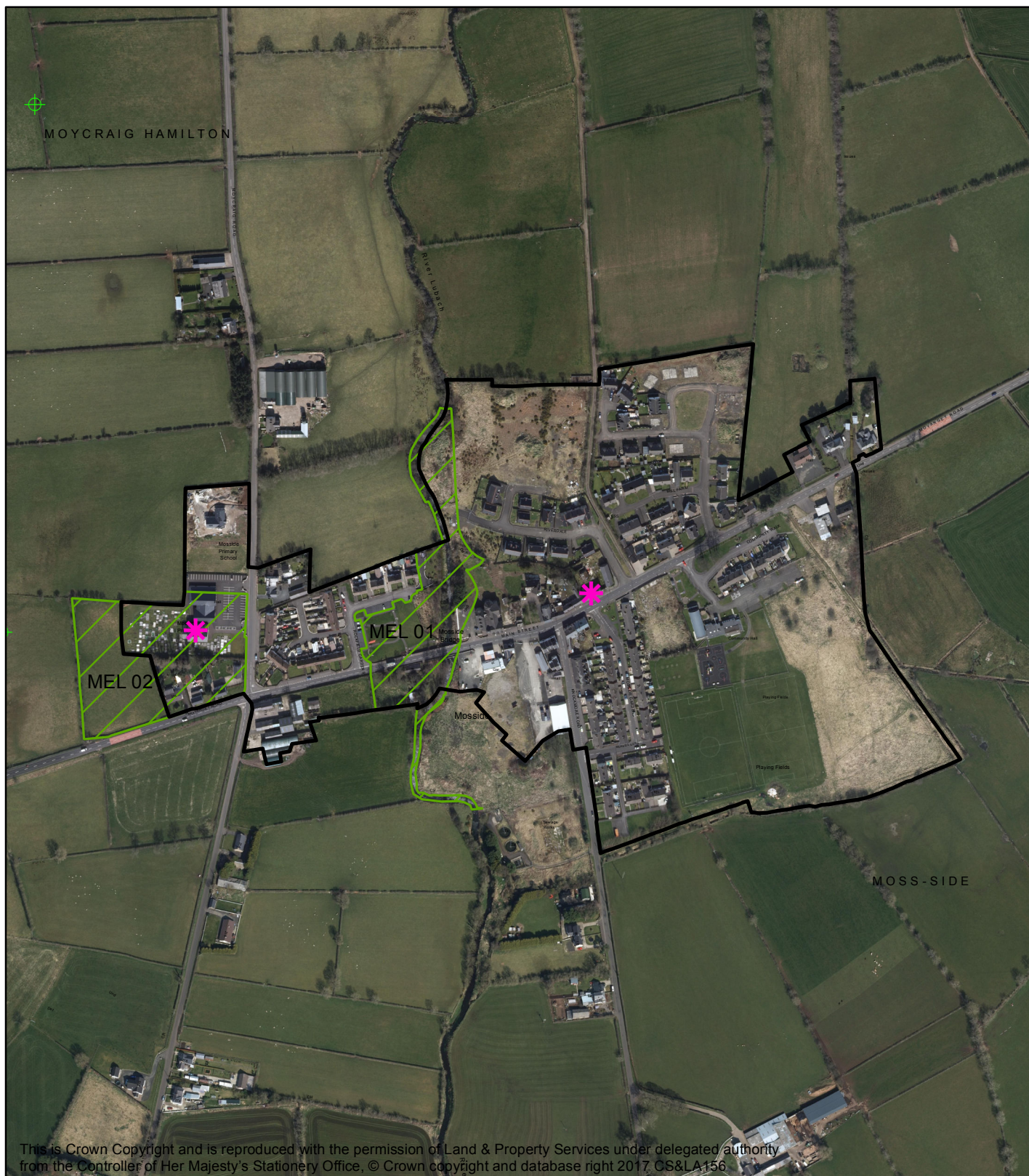




Map No. 2 - Mossie Local Landscape Policy Areas



-  Settlement Development Limit
-  Local Landscape Policy Area

-  Listed Building
-  Archaeological Site & Monument (Unscheduled)



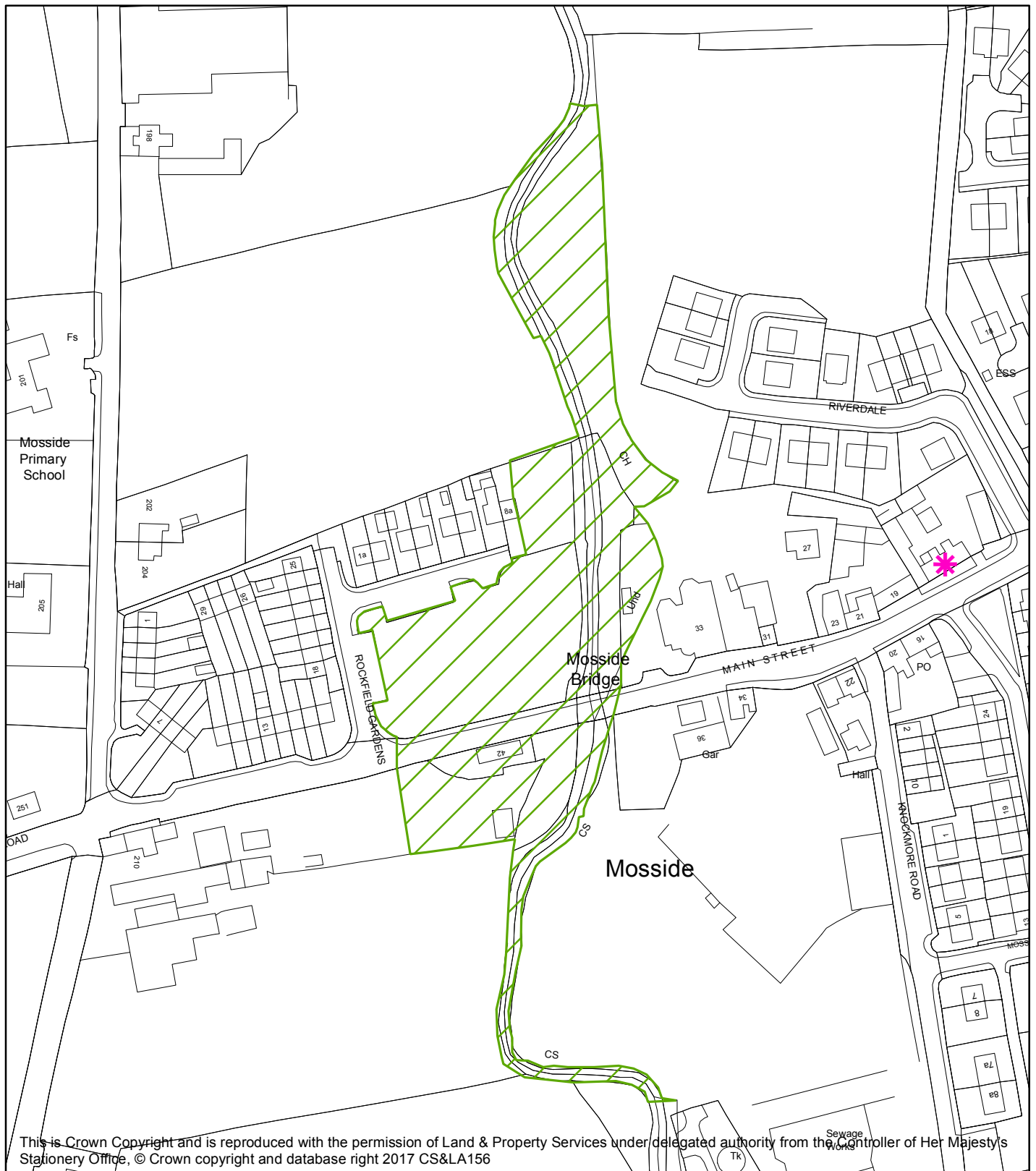
Map No. 2 - Moss-side Local Landscape Policy Areas

-  Settlement Development Limit
-  Local Landscape Policy Area



-  Listed Building
-  Archaeological Site & Monument (Unscheduled)

0 100 200 Metres





Map No. 2a - MEL 01 Mosside Water Local Landscape Policy Area

-  Settlement Development Limit
-  Local Landscape Policy Area

 Listed Building

0 50 100 Metres





Map No. 2a - MEL 01 Mosside Water Local Landscape Policy Area

-  Settlement Development Limit
-  Local Landscape Policy Area



 Listed Building

0 50 100 Metres





Map No. 2b - MEL 02 Mossie Crossroads Local Landscape Policy Area

-  Settlement Development Limit
-  Local Landscape Policy Area

 Listed Building

0 25 50 Metres





Map No. 2b - MEL 02 Mossie Crossroads Local Landscape Policy Area

-  Settlement Development Limit
-  Local Landscape Policy Area

 Listed Building

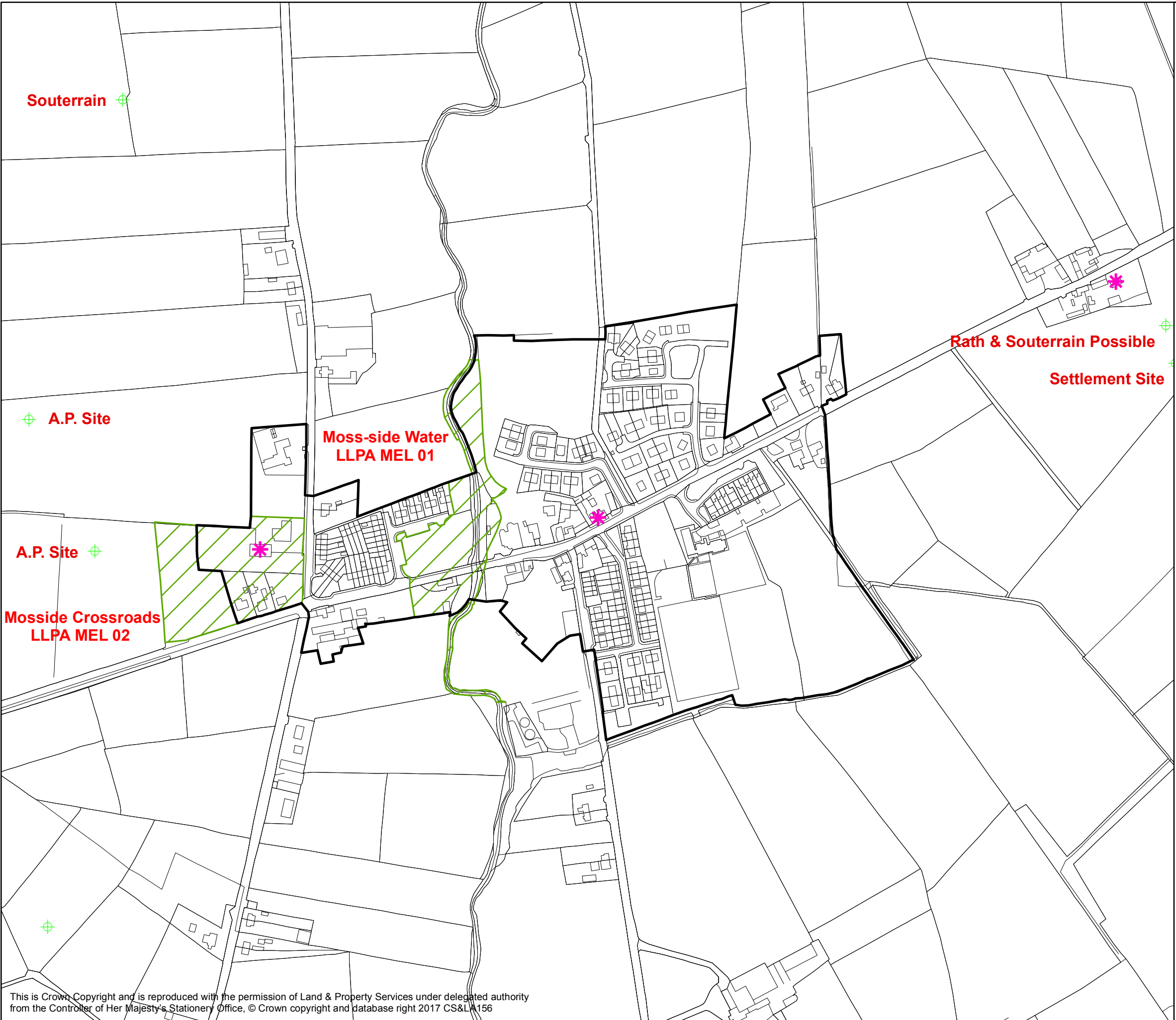
0 25 50 Metres

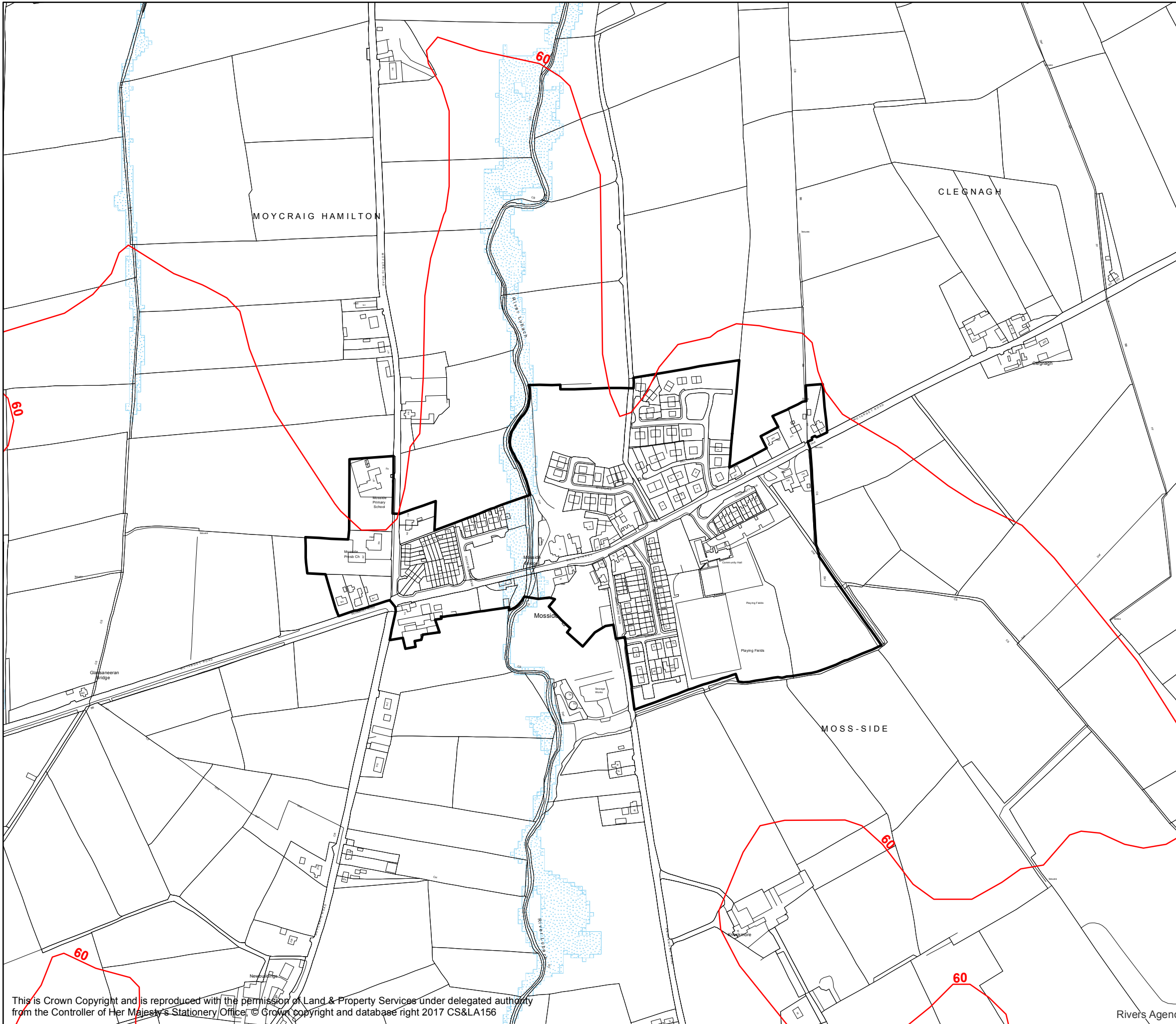


**Map No. 3
Mossie
Built and Natural Environment**

-  Settlement Development Limit
-  Local Landscape Policy Area
-  Listed Building
-  Archaeological Site & Monument (Unscheduled)

0 75 150 Metres





Map No. 4 - Mosside Flood and Contour Map

Settlement Development Limit

Contour

Fluvial

Present Day

Q100 Flood Extent Detailed
(Maximum Flood Extent reached by detailed river flood model at Q100 return period)

Q100 Flood Extent Strategic
(Extent for Strategic Modelling at Q100pd return period)

Future

Q100CC Flood Extent Detailed
(Includes rivers/culverts that have been hydro-dynamically modelled. Illustrating the potential impacts of climate change)

Q100CC Flood Extent Strategic
(Rivers (mostly outside significant flood risk areas) that have been modelled using strategic modelling methods. Illustrating the potential impacts of climate change)

Fluvial and Tidal

Present Day

T200 Flood Extent Detailed
(Includes rivers/culverts/coastal areas that have been hydro-dynamically modelled.)

T200 Flood Extent Strategic
(Includes rivers and coastal areas (mostly outside significant flood risk areas) that have been modelled using strategic modelling method)

Future

T200CC Flood Extent Detailed
(Includes rivers/culverts/coastal areas that have been hydro-dynamically modelled. Illustrating the potential impact of climate change on flooding)

T200CC Flood Extent Strategic
(Rivers/coastal areas (mostly outside significant flood risk areas) that have been modelled using strategic modelling methods. Illustrating the potential impact of climate change on flooding)

0100200 Metres

N

Map No. 5 - Mosside
Fly Date: 25/09/2017

