



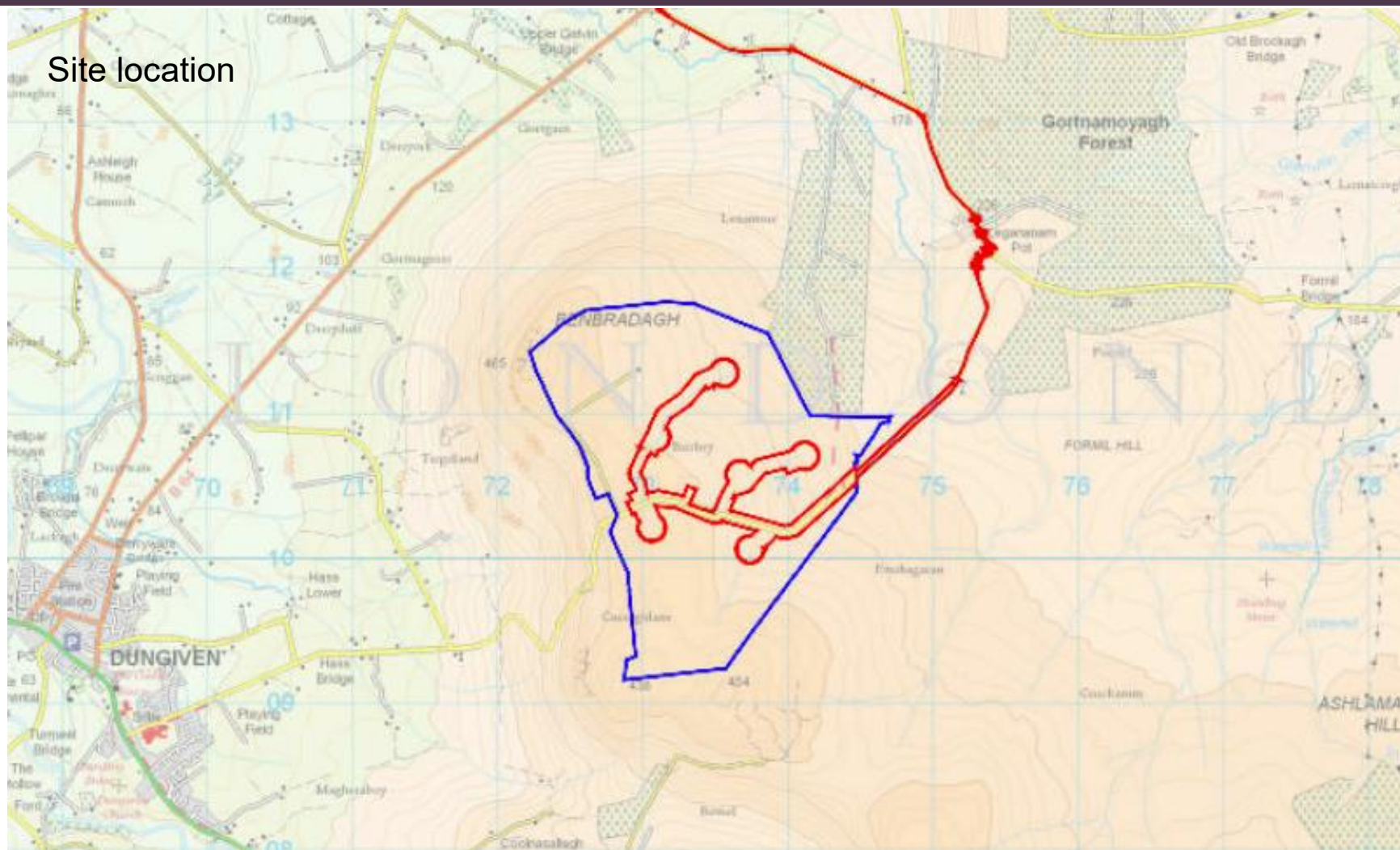
# LA01/2023/0008/F

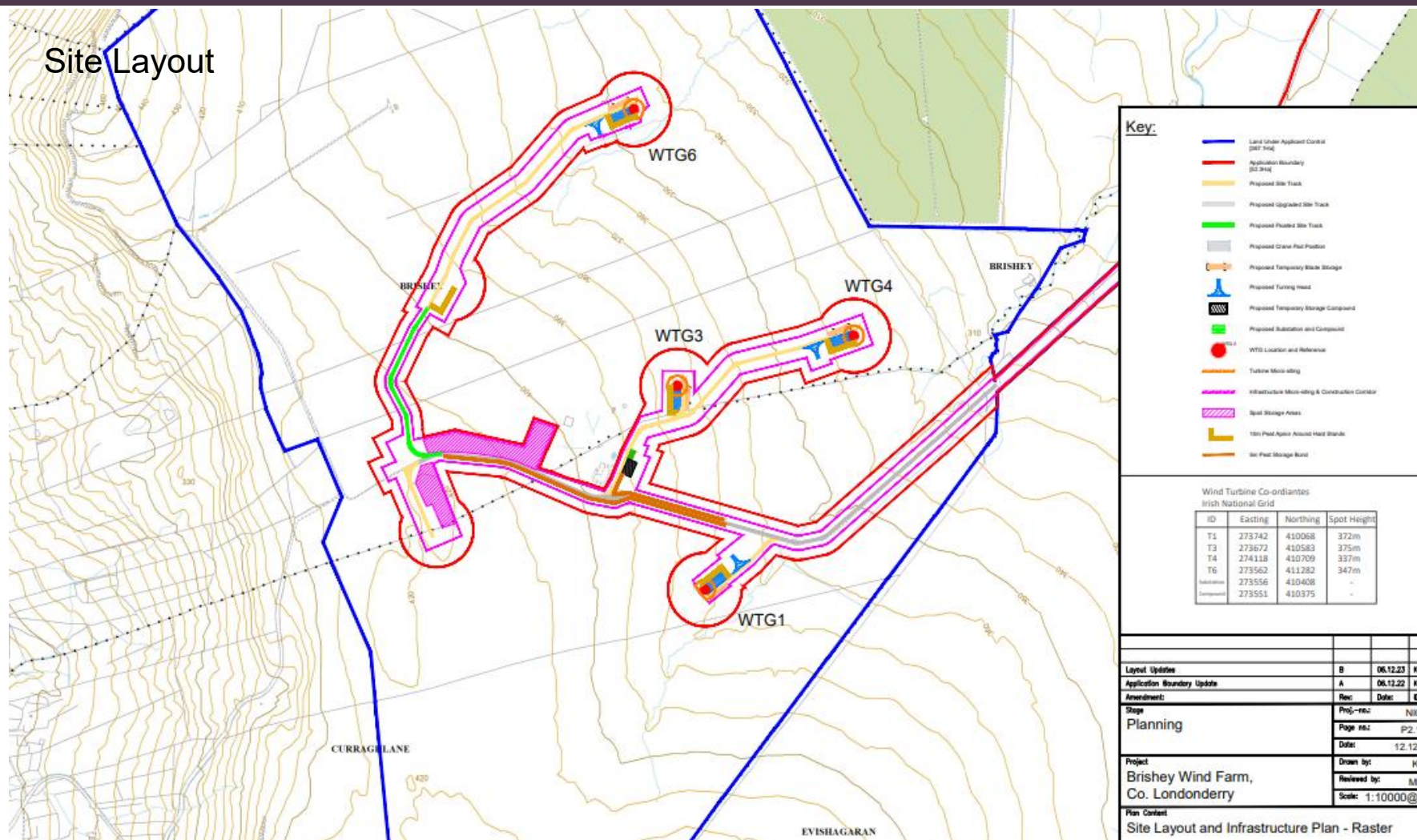
Construction of a windfarm comprising up to 4no. turbines (to a maximum blade tip height of 150 metres) an electrical substation/control building, internal access tracks, spoil deposition areas, temporary construction compound, delivery route junction improvements and all associated ancillary works

Lands Approximately 1.86km WSW of 175 Gelvin Road, in the townlands of Brishey and Curraghlane, approx 4.8km E of Dungiven



Site location

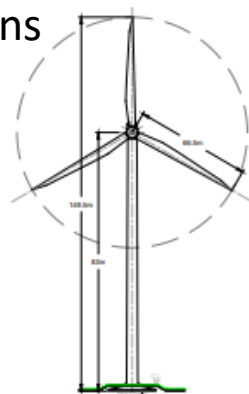








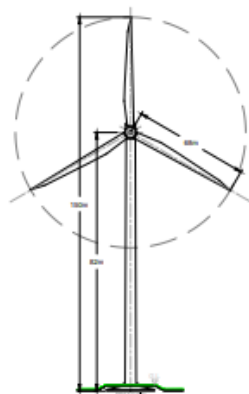
## Proposed turbine elevations



Option A - Nordex

Turbine Specifications:

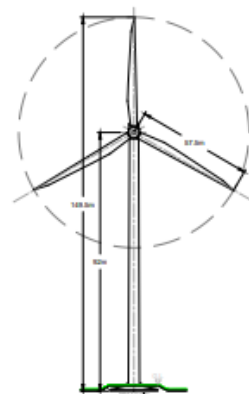
- WTG Type - N153
- WTG Capacity - 4.6MW
- Hub Height - 82m
- Rotor Diameter - 120m
- Tip Height - 148.5m



Option B - Vestas

Turbine Specifications:

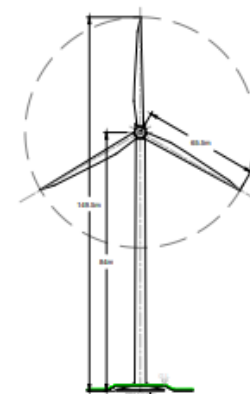
- WTG Type - V150
- WTG Capacity - 4.5MW
- Hub Height - 82m
- Rotor Diameter - 120m
- Tip Height - 150m



Option C - Enercon

Turbine Specifications:

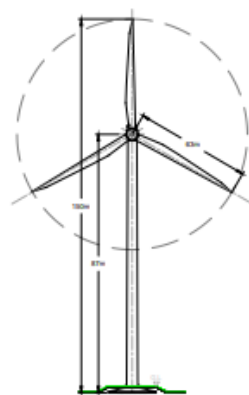
- WTG Type - E115
- WTG Capacity - 4.2MW
- Hub Height - 82m
- Rotor Diameter - 115m
- Tip Height - 149.5m



Option D - Nordex

Turbine Specifications:

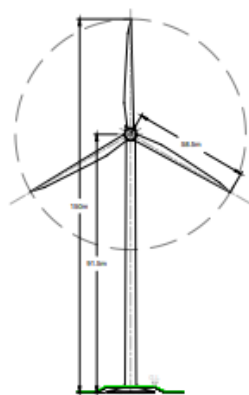
- WTG Type - N151
- WTG Capacity - 3.6MW + 3.6MW
- Hub Height - 82m
- Rotor Diameter - 120m
- Tip Height - 148.5m



Option E - Vestas

Turbine Specifications:

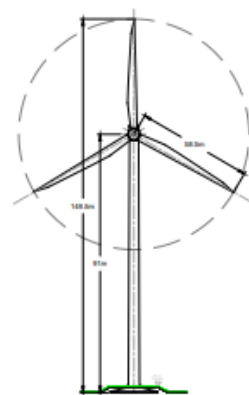
- WTG Type - V150
- WTG Capacity - 3.6MW
- Hub Height - 82m
- Rotor Diameter - 120m
- Tip Height - 150m



Option F - Vestas

Turbine Specifications:

- WTG Type - V150
- WTG Capacity - 4.2MW
- Hub Height - 82m
- Rotor Diameter - 120m
- Tip Height - 150m



Option G - Nordex

Turbine Specifications:

- WTG Type - V117
- WTG Capacity - 3.6MW
- Hub Height - 82m
- Rotor Diameter - 117m
- Tip Height - 149.5m

VP 15 – Legavallon Road





VP 23 – Foreglen Road



VP 3 – Feeny Road new flyover





VP 5 – Garvagh Road, Dungiven





VP 13 – Belraugh Road



VP 01 – Glenshane Road

